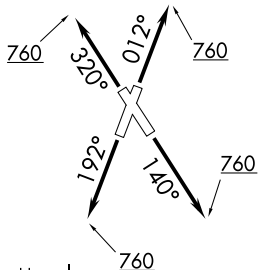
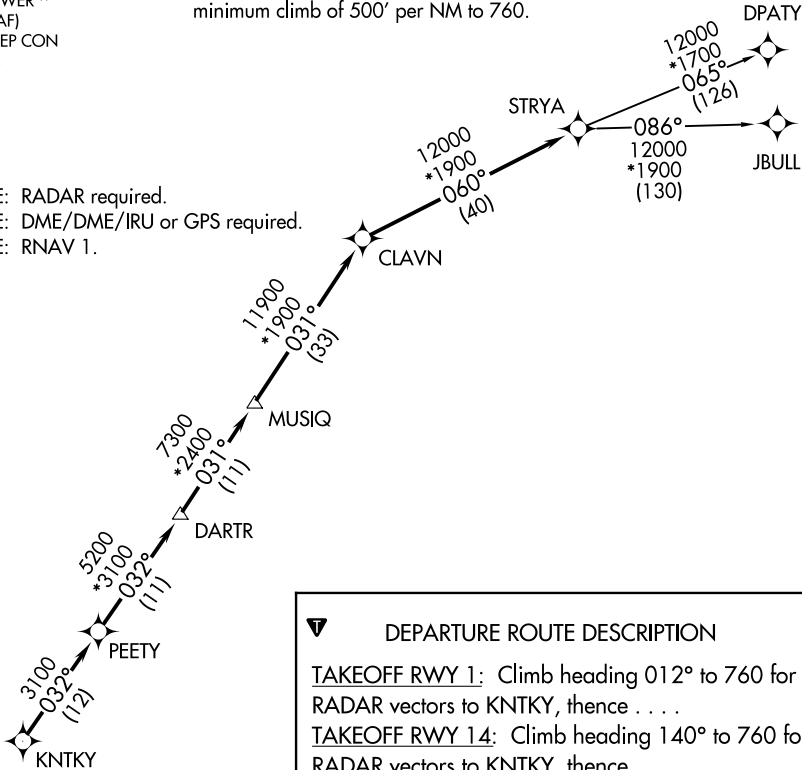


ATIS
118.325
CLINC DEL
120.45
119.55 (when tower closed)
GND CON
120.45
CONROE TOWER ★
124.125 (CTAF)
HOUSTON DEP CON
119.7 281.4

TOP ALTITUDE: ASSIGNED BY ATC

TAKEOFF MINIMUMS
Rwys 1, 14, 19, 32: Standard with
minimum climb of 500' per NM to 760.

NOTE: RADAR required.
NOTE: DME/DME/IRU or GPS required.
NOTE: RNAV 1.



NOTE: Chart not to scale.

▼ DEPARTURE ROUTE DESCRIPTION

TAKEOFF RWY 1: Climb heading 012° to 760 for
RADAR vectors to KNTKY, thence . . .

TAKEOFF RWY 14: Climb heading 140° to 760 for
RADAR vectors to KNTKY, thence . . .

TAKEOFF RWY 19: Climb heading 192° to 760 for
RADAR vectors to KNTKY, thence . . .

TAKEOFF RWY 32: Climb heading 320° to 760 for
RADAR vectors to KNTKY, thence . . .

. . . . on track 032° to PEETY, then on track 032° to
DARTR, then on track 031° to MUSIQ, then on track
031° to CLAVN, then on track 060° to STRYA, then
on (transition). Maintain ATC assigned altitude.
Expect filed altitude 10 minutes after departure.

DPATY TRANSITION (STRYA7.DPATY)

JBULL TRANSITION (STRYA7.JBULL)

SC-5, 03 DEC 2020 to 31 DEC 2020

SC-5, 03 DEC 2020 to 31 DEC 2020