

APP CRS <b>173°</b>	Rwy Idg <b>5000</b> TDZE <b>343</b> Apt Elev <b>355</b>
------------------------	---

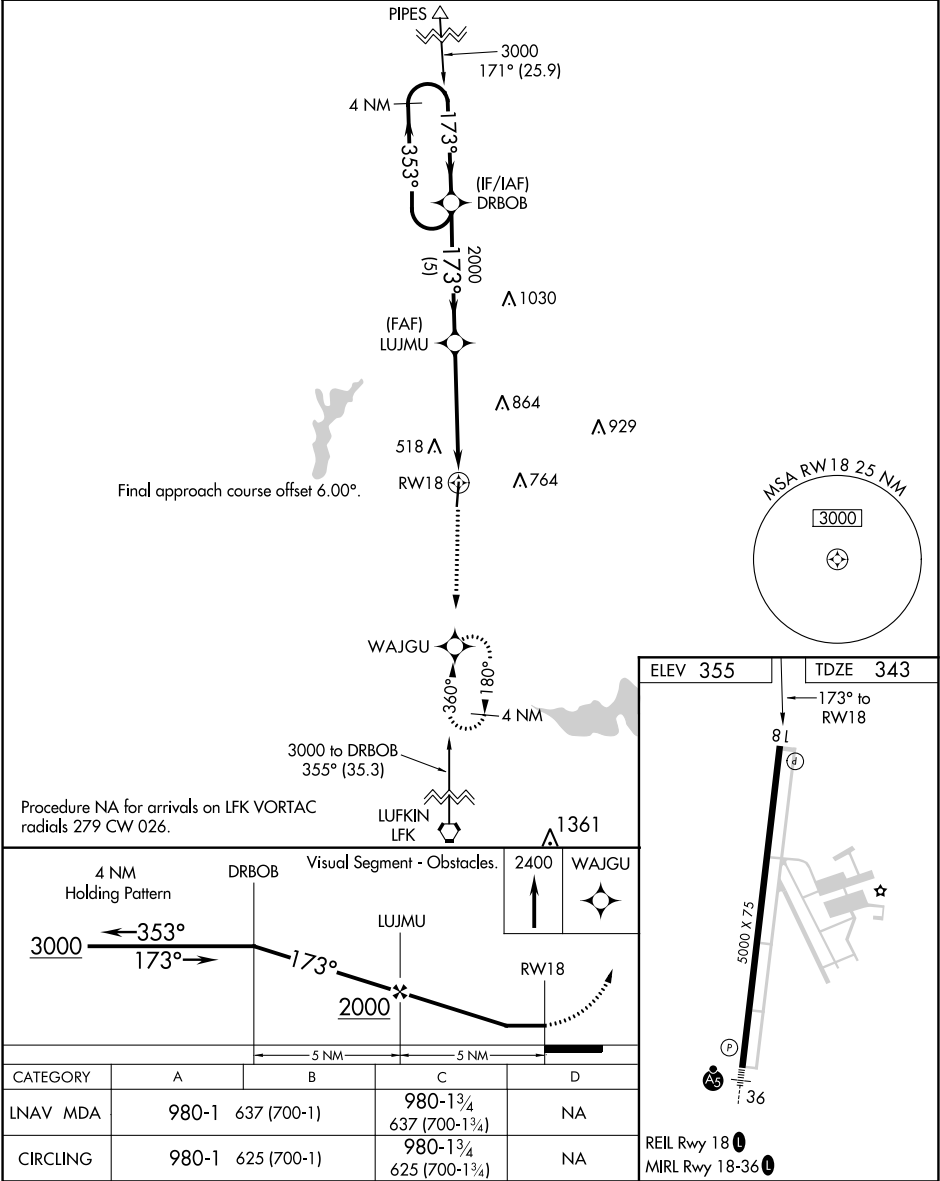
RNAV (GPS) RWY 18

NACOGDOCHES A L MANGHAM JR RGNL (OCH)

DME/DME RNP-0.3 NA. Rwy 18 helicopter visibility reduction below 1 SM NA. When local altimeter not received, use Lufkin altimeter setting and increase all MDA 60 feet and increase LNAV and Circling Cat C visibility to 2 SM.

MISSED APPROACH: Climb to 2400 direct WAJGU and hold.

AWOS-3PT <b>135.625</b>	HOUSTON CENTER <b>125.175 285.575</b>	UNICOM <b>123.0 (CTAF) 0</b>
----------------------------	--	---------------------------------



SC-5, 03 DEC 2020 to 31 DEC 2020

SC-5, 03 DEC 2020 to 31 DEC 2020