

CTAF  
122.8  
HOUSTON DEP CON  
134.45 284.0

TOP ALTITUDE:  
ASSIGNED BY ATC

NOTE: RADAR required.  
NOTE: DME/DME/IRU or GPS required.  
NOTE: RNAV 1.

TAKEOFF MINIMUMS  
Rwy 14, 32: Standard with minimum  
climb of 500' per NM to 540.

▼

DEPARTURE ROUTE DESCRIPTION

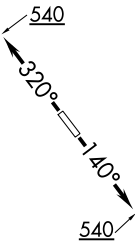
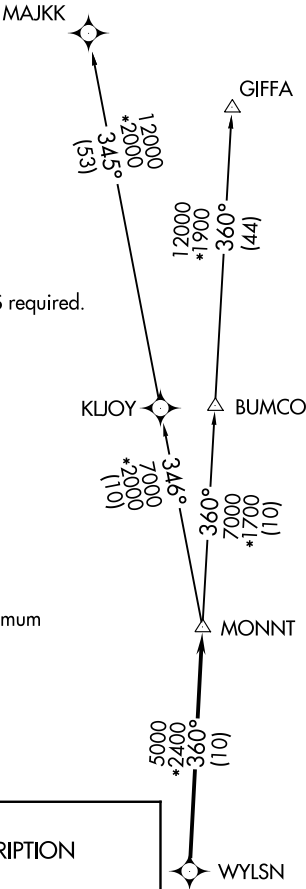
TAKEOFF RWY 14: Climb on heading 140° to 540 for RADAR vectors to WYLSN, thence. . . .

TAKEOFF RWY 32: Climb on heading 320° to 540 for RADAR vectors to WYLSN, thence. . . .

. . . .on track 360° to MONNT, then on (transition). Maintain ATC assigned altitude. Expect filed altitude 10 minutes after departure.

GIFFA TRANSITION (WYLSN7.GIFFA)

MAJJK TRANSITION (WYLSN7.MAJKK)



NOTE: Chart not to scale.