

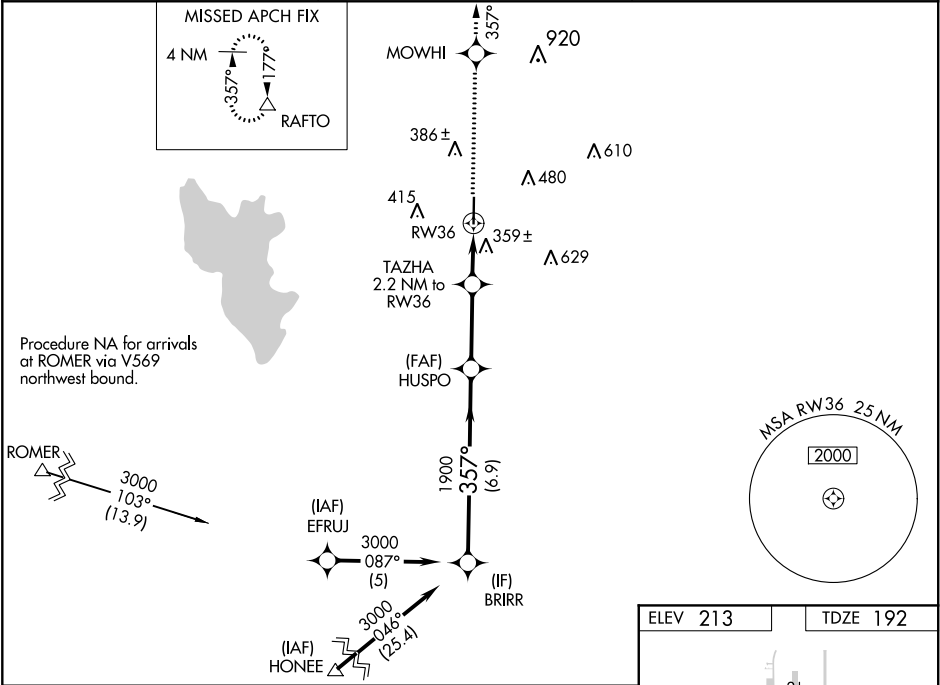
WAAS CH <b>42813</b> <b>W36A</b>	APP CRS <b>357°</b>	Rwy Idg TDZE <b>192</b> Apt Elev <b>213</b>	<b>5500</b>
--	------------------------	---	-------------

**RNAV (GPS) RWY 36**  
JASPER COUNTY-BELL FIELD (JAS)

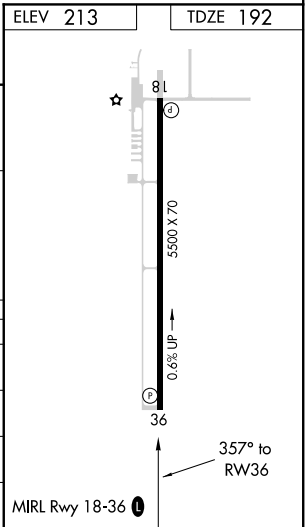
**⚠** Baro-VNAV NA when using De Ridder altimeter setting. For uncompensated Baro-VNAV systems, LNAV/VNAV NA below -15°C (5°F) or above 54°C (130°F). DME/DME RNP-0.3 NA. Helicopter visibility reduction below ¾ SM NA. VDP NA when using De Ridder altimeter setting. When local altimeter setting not received, use De Ridder altimeter setting and increase all DA 85 feet, all MDA 100 feet; increase LPV visibility all Cats and LNAV Cat C ¾ mile, LNAV/VNAV visibility all Cats and Circling Cat C ¼ mile.

**MISSED APPROACH:**  
Climb to 4000 direct MOWHI and via track 357° to RAFTO and hold.

AWOS-3 <b>118.375</b>	HOUSTON CENTER <b>126.95 363.05</b>	UNICOM <b>122.8 (CTAF) 0</b>
--------------------------	--	---------------------------------



Procedure Turn NA	BRIRR	VGSI and RNAV glidepath not coincident (VGSI Angle 3.15/TCH 49).	4000	MOWHI	tr 357°	RAFTO
GP 3.00° TCH 41	3000	HUSPO	1900	900	TAZHA 2.2 NM to RW36	*1.5 NM to RW36 *LNAV only
	6.9 NM	3 NM	0.7 NM	1.5 NM		
CATEGORY	A	B	C	D		
LPV DA	594-1¾	402 (400-1¾)				NA
LNAV/VNAV DA	675-1¾	483 (500-1¾)				NA
LNAV MDA	680-1	488 (500-1)	680-1¾ 488 (500-1¾)			NA
CIRCLING	740-1	527 (600-1)	740-1½ 527 (600-1½)			NA



SC-5, 03 DEC 2020 to 31 DEC 2020

SC-5, 03 DEC 2020 to 31 DEC 2020