

| | | |
|--|------------------------|---|
| WAAS CH 72811 W18A | APP CRS 180° | Rwy Idg 5005 TDZE 338 Apt Elev 363 |
|--|------------------------|---|

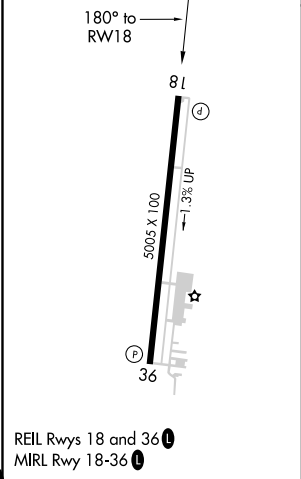
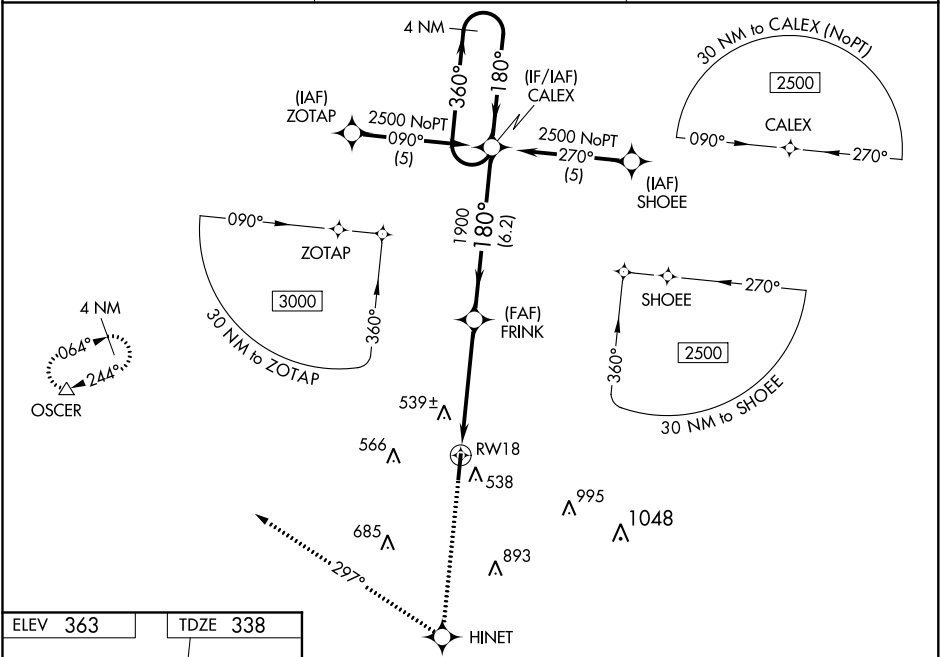
RNAV (GPS) RWY 18


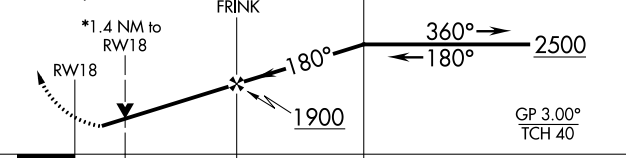
HUNTSVILLE MUNI (UTS)

▼ Baro-VNAV NA when using Lone Star Executive altimeter setting. For uncompensated Baro-VNAV systems, LNAV/VNAV NA below -15°C (5°F) or above 54°C (130°F). DME/DME RNP-0.3 NA. Visibility reduction by helicopters NA. VDP NA when using Lone Star Executive altimeter setting. When local altimeter setting not received, use Lone Star Executive altimeter setting and increase all DA 75 feet and all MDA 80 feet; increase LPV and LNAV/VNAV all Cats and Circling Cat C visibility ¼ mile.

⚠ MISSED APPROACH: Climb to 4000 direct HINET and right turn via track 297° to OSCER and hold.

| | | |
|------------------------|--------------------------------------|---------------------------------|
| ASOS 119.425 | HOUSTON CENTER 134.8 269.6 | UNICOM 122.8 (CTAF) ① |
|------------------------|--------------------------------------|---------------------------------|



| | | | | | |
|---|-------|---|---|---|----|
| 4000 | HINET | OSCER | VGSI and RNAV glidepath not coincident (VGSI Angle 3.00/TCH 26). | | |
| ↑ | ✦ |  tr 297° | △ | | |
| *LNAV only. | | | | | |
|  | | | | | |
| CATEGORY | A | | B | C | D |
| LPV DA | 588-1 | | 250 (300-1) | | NA |
| LNAV/ VNAV | DA | 886-2 | 548 (600-2) | | NA |
| LNAV MDA | 840-1 | 502 (500-1) | 840-1½ 502 (500-1½) | | NA |
| CIRCLING | 900-1 | 537 (600-1) | 900-1½ 537 (600-1½) | | NA |