

WAAS CH 78326 W31A	APP CRS 311°	Rwy Idg 5107 TDZE 44 Apt Elev 45
--	------------------------	---

RNAV (GPS) RWY 31
BAY CITY RGNL (BYY)

▼ For uncompensated Baro-VNAV systems, LNAV/VNAV NA below -15°C (5°F) or above 54°C (130°F). Rwy 13, 31 helicopter visibility reduction below 1 SM NA. **▲** DME/DME RNP-0.3 NA. When local altimeter setting not received, use Palacios altimeter setting and increase all DA 63 feet and all MDA 80 feet; increase LNAV visibility Cat C ½ mile. VDP and Baro-VNAV N/A when using Palacios altimeter setting.

MISSED APPROACH: Climb to 2000 direct COSDI and hold.

AWOS-3 118.075	HOUSTON CENTER 128.6 360.8	UNICOM 122.8 (CTAF) 0
--------------------------	--------------------------------------	--

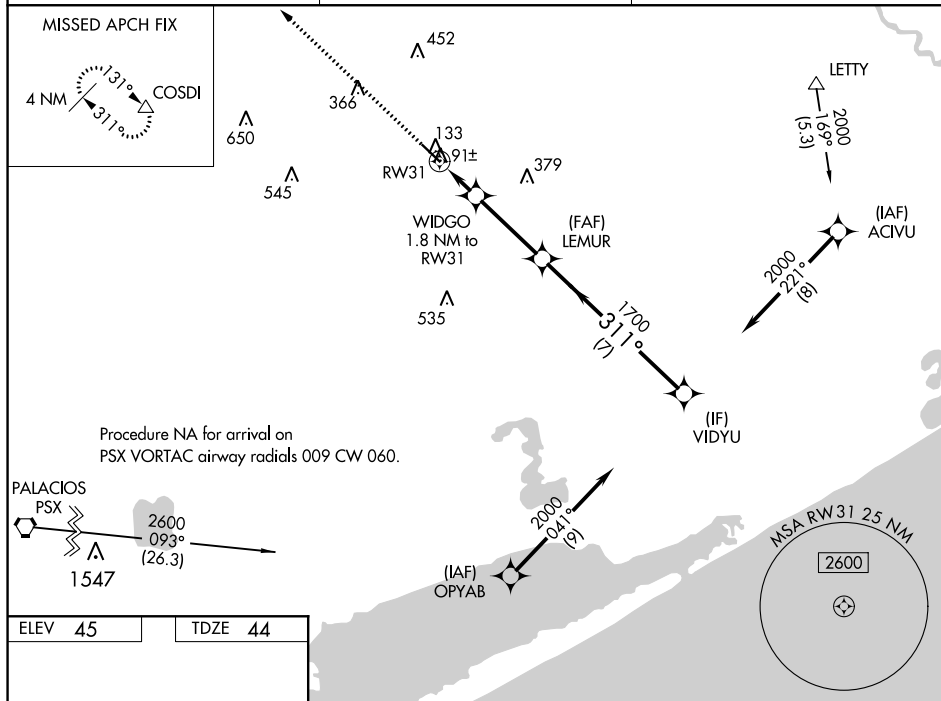


Diagram illustrating the RW31 instrument approach for RWY 31. The approach is a 311° approach to RW31. Key features include the 2000 MSL elevation, COSDI (Crosswind Component Diagram), and various navigation aids like LNAV, VNAV, and MDA. The approach is categorized as LPV DA, LNAV/VNAV DA, and LNAV MDA. The diagram also shows the 311° to RW31 angle and the 3.3 NM distance to the runway.

CATEGORY	A	B	C	D
LPV DA	294-1	250 (300-1)		NA
LNAV/VNAV DA	294-1	250 (300-1)		NA
LNAV MDA	360-1	316 (400-1)		NA
C CIRCLING	500-1	455 (500-1)	620-1½ 575 (600-1½)	NA