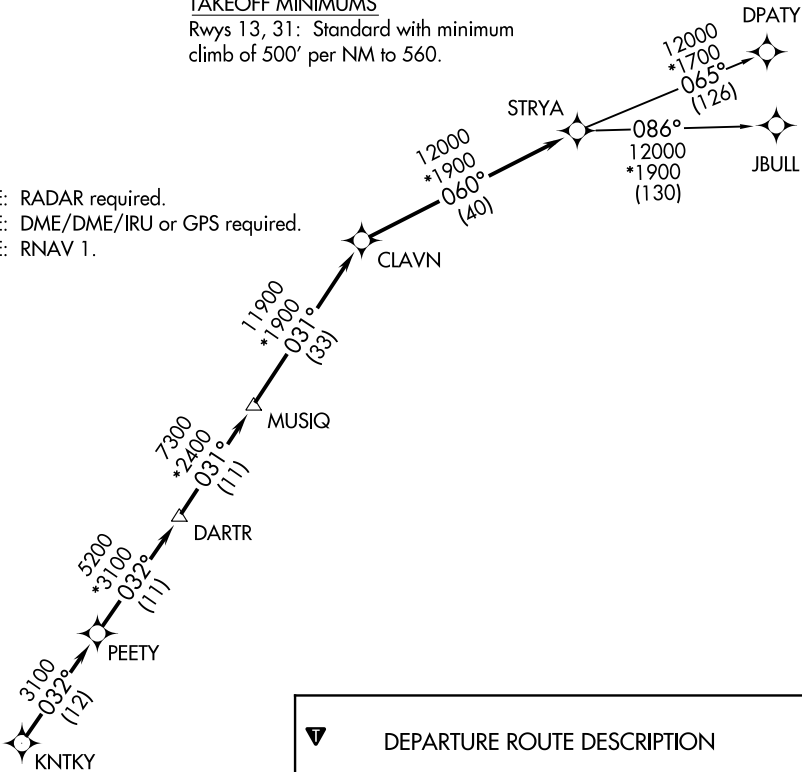


AWOS-3  
118.075  
CTAF  
122.8  
HOUSTON DEP CON  
128.6 360.85

TOP ALTITUDE: ASSIGNED BY ATC

TAKEOFF MINIMUMS  
Rwys 13, 31: Standard with minimum  
climb of 500' per NM to 560.

NOTE: RADAR required.  
NOTE: DME/DME/IRU or GPS required.  
NOTE: RNAV 1.



DEPARTURE ROUTE DESCRIPTION

TAKEOFF RWY 13: Climb heading 131° to 560 for  
RADAR vectors to KNTKY, thence . . . .  
TAKEOFF RWY 31: Climb heading 311° to 560 for  
RADAR vectors to KNTKY, thence . . . .

. . . . on track 032° to PEETY, then on track 032° to  
DARTR, then on track 031° to MUSIQ, then on track  
031° to CLAVN, then on track 060° to STRYA, then  
on (transition). Maintain ATC assigned altitude.  
Expect filed altitude 10 minutes after departure.

DPATY TRANSITION (STRYA7.DPATY)  
JBULL TRANSITION (STRYA7.JBULL)

NOTE: Chart not to scale.