

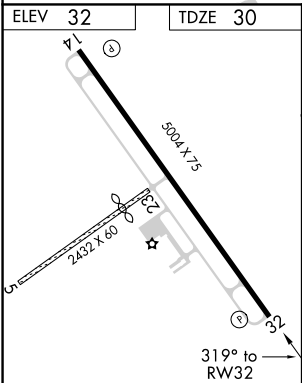
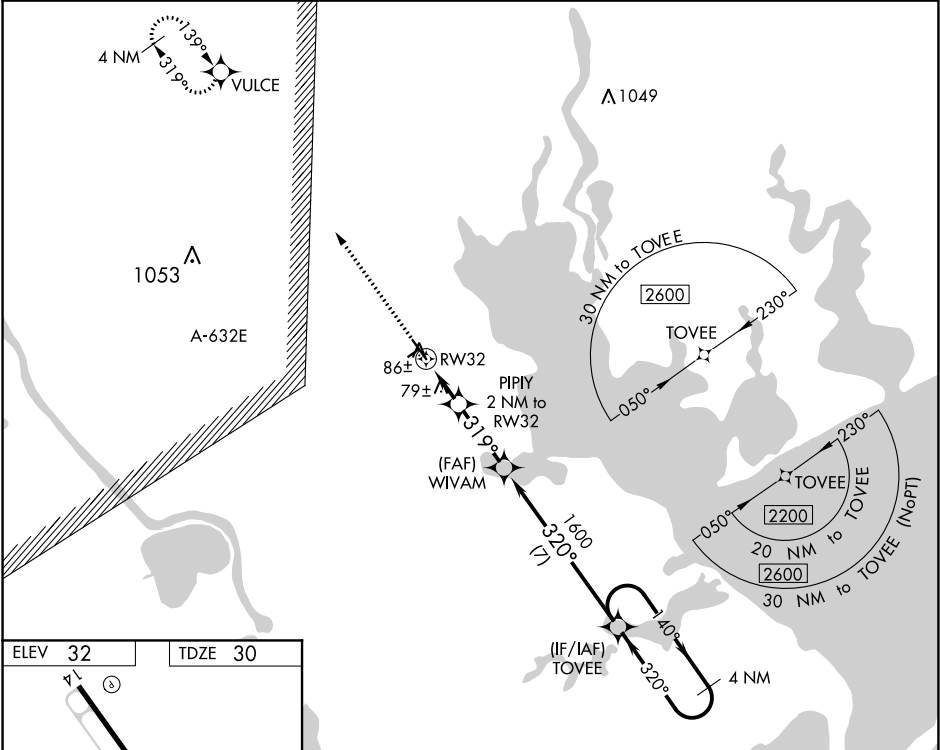
WAAS CH 58037 W32A	APP CRS 319°	Rwy ldg TDZE 30 Apt Elev 32	5004
--	------------------------	---	-------------

RNAV (GPS) RWY 32
CALHOUN COUNTY (PKV)

⚠ When local altimeter setting not received, use Victoria altimeter setting and increase all MDA 60 feet and increase LNAV Cat C and Circling Cat C visibilities ¼ mile.
DME/DME RNP-0.3 NA. Helicopter visibility reduction below 1 SM NA.
Night landing: Rwy 32 NA. Circling NA to Rwys 5 and 23.

MISSED APPROACH: Climb to 2200 direct VULCE and hold.

AWOS-3 118.275	HOUSTON CENTER 128.15 350.3	UNICOM 122.8 (CTAF) 0
--------------------------	---------------------------------------	---------------------------------



2200	VULCE	TOVEE	4 NM	Holding Pattern
↑	✧	↑	140°	2200
PIPIY 2 NM to RW32	WIVAM	TOVEE	140°	2200
≤3.00° TCH 45	1600	320°	←320°	2200
RW32	700	319°	←320°	2200
2 NM	2.8 NM	7 NM		
CATEGORY	A	B	C	D
LP MDA	340-1	310 (400-1)		NA
LNAV MDA	400-1	370 (400-1)		NA
CIRCLING	480-1 448 (500-1)	500-1 468 (500-1)	560-1½ 528 (600-1½)	NA