


PORT LAVACA, TEXAS

AL-5904 (FAA)

20282

VORTAC PSX <b>117.3</b> Chan <b>120</b>	APP CRS <b>244°</b>	Rwy ldg TDZE Apt Elev <b>N/A</b> <b>N/A</b> <b>32</b>
---	------------------------	--

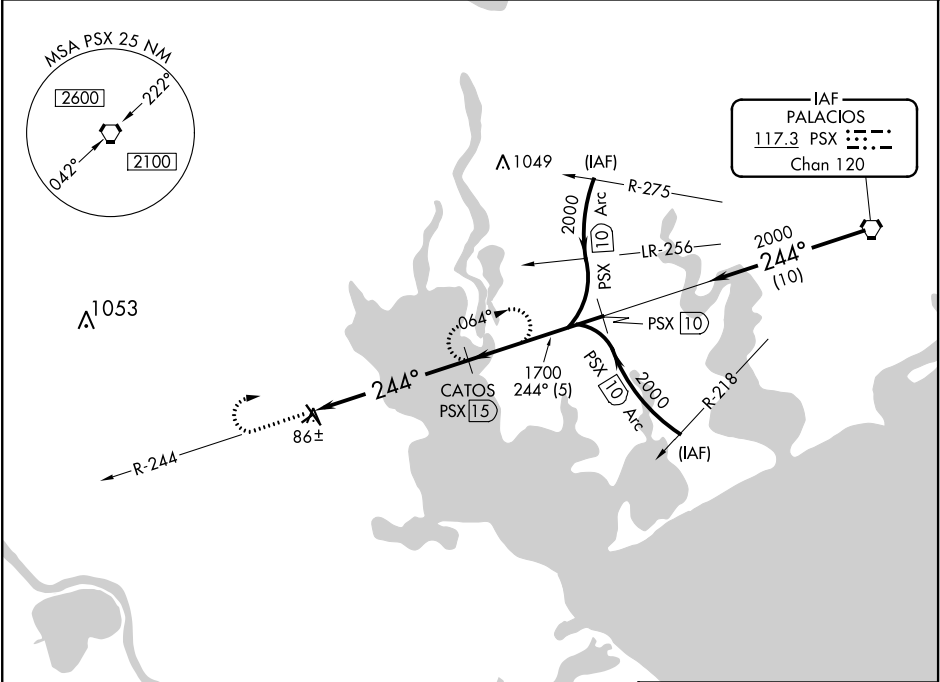
**VOR/DME-A**  
CALHOUN COUNTY (PKV)



When local altimeter setting not received, use Victoria altimeter setting. Circling NA to Rwy 5 and 23. Night landing: Rwy 32 NA.

MISSED APPROACH: Climb to 2100, then right turn via PSX VORTAC R-244 to CATOS/PSX 15 DME and hold.

AWOS-3 <b>118.275</b>	HOUSTON CENTER <b>128.15 350.3</b>	UNICOM <b>122.8</b> (CTAF) <b>0</b>
--------------------------	---------------------------------------	--



ELEV 32

CATEGORY	A	B	C	D
CIRCLING	760-1 728 (800-1)	760-1¼ 728 (800-1¼)	760-2 728 (800-2)	NA

MIRL Rwy 14-32 **0**

PORT LAVACA, TEXAS  
Amdt 4D 08OCT20

28°39'N-96°41'W

CALHOUN COUNTY (PKV)  
**VOR/DME-A**

SC-5, 03 DEC 2020 to 31 DEC 2020

SC-5, 03 DEC 2020 to 31 DEC 2020