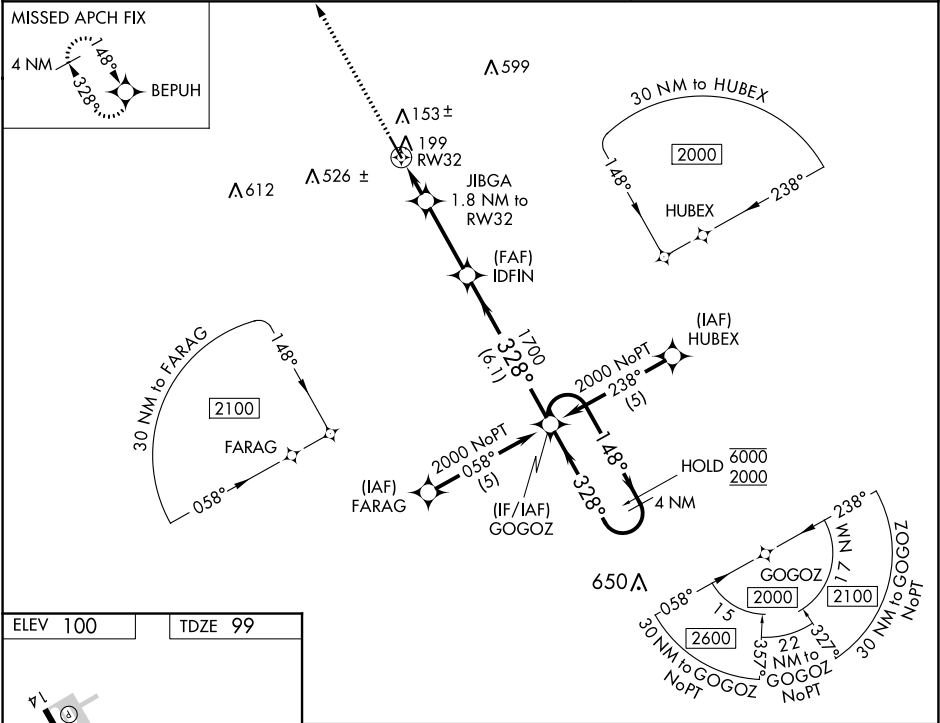


WAAS CH 58114 W32A	APP CRS 328°	Rwy Idg TDZE 99 Apt Elev 100	5004
--	------------------------	--	-------------

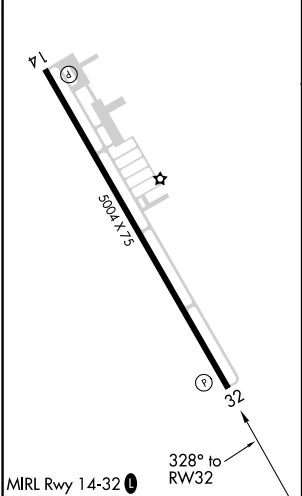
RNAV (GPS) RWY 32
WHARTON RGNL (A.R.M)

RNP APCH. ▼ For uncompensated Baro-VNAV systems, LNAV/VNAV NA below -15°C or above 54°C.	MISSED APPROACH: Climb to 2000 direct BEPUH and hold.
--	---

AWOS-3 118.475	HOUSTON CENTER 128.6 360.8	UNICOM 122.7 (CTAF) 0
--------------------------	--------------------------------------	---------------------------------



ELEV 100	TDZE 99
----------	---------



2000	BEPUH	GOGOZ 4 NM Holding Pattern			
*LNAV only	JIBGA 1.8 NM to RW32	IDFIN 1700	148° → 6000 ← 328° 2000		
1 NM to RW32	RW32	700	GP 3.00° TCH 42		
1 NM	0.8	3 NM	6.1 NM		
CATEGORY	A	B	C	D	
LPV DA	349-1 250 (300-1)			NA	
LNAV/VNAV DA	399-1 300 (300-1)			NA	
LNAV MDA	460-1 361 (400-1)			NA	