

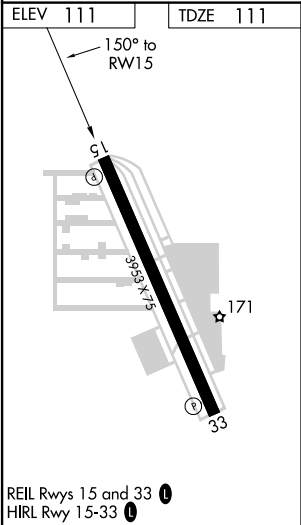
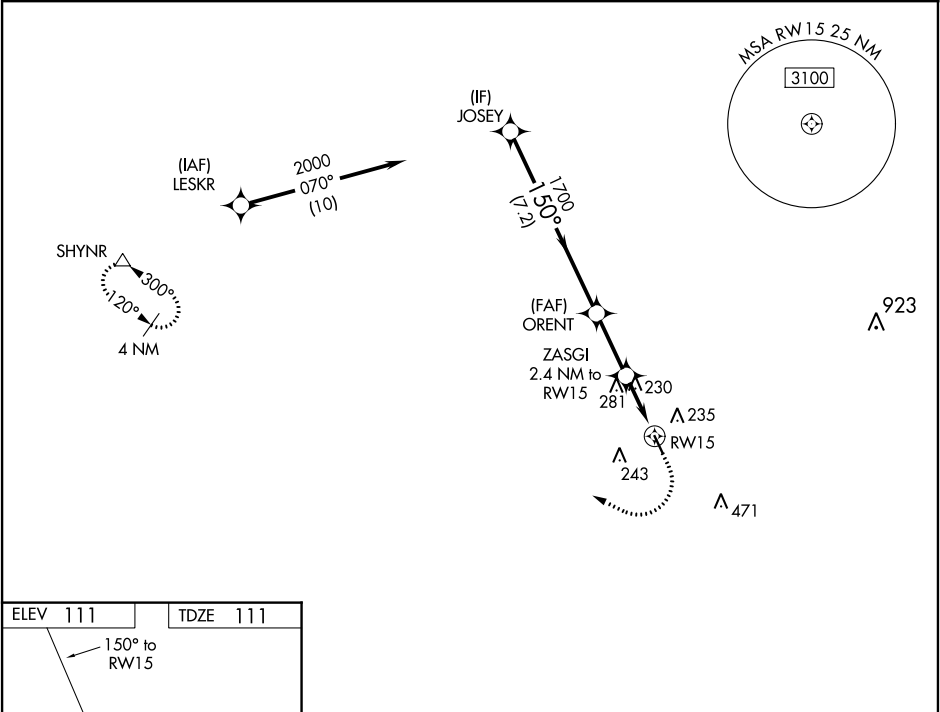
WAAS CH 40429 W15A	APP CRS 150°	Rwy Idg TDZE 111 Apt Elev 111	3953
--	------------------------	---	-------------

RNAV (GPS) RWY 15

WEST HOUSTON (IWS)

RNP APCH.	MISSED APPROACH: Climb to 600 then climbing right turn to 2000 direct SHYNR and hold.
<div><div>Procedure NA at night.</div><div>Rwy 15 helicopter visibility reduction below 1 SM NA.</div><div>Use George Bush Intercontinental/Houston altimeter setting.</div></div>	

HOUSTON APP CON 123.8 257.7	CLNC DEL 121.15	UNICOM 123.05 (CTAF) 0
---------------------------------------	---------------------------	----------------------------------



VGSI and descent angles not coincident (VGSI Angle 3.70/TCH 43).				600	2000	SHYNR
JOSEY				↑	↷	△
ORENT						
ZASGI 2.4 NM to RW15						
RW15						
7.2 NM						
2.5 NM						
2.4 NM						
CATEGORY	A	B	C	D		
LP MDA	540-1	429 (500-1)	540-1¼ 429 (500-1¼)	NA		
LNAV MDA	580-1	469 (500-1)	580-1¾ 469 (500-1¾)	NA		
CIRCLING	600-1	489 (500-1)	640-1½ 529 (600-1½)	NA		