

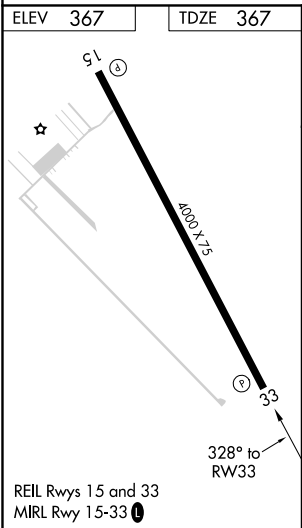
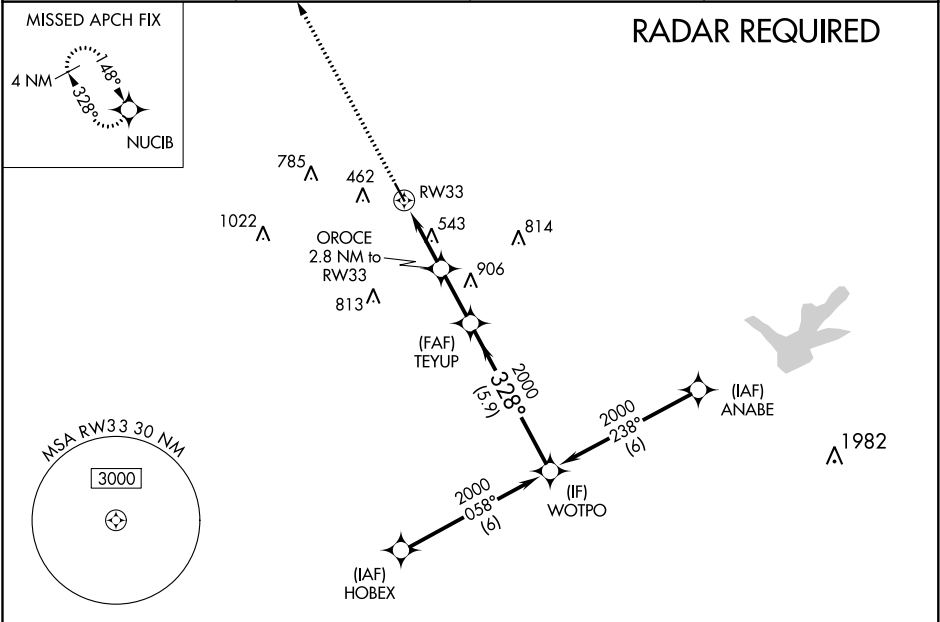
WAAS CH <b>70603</b> <b>W33A</b>	APP CRS <b>328°</b>	Rwy Idg TDZE Apt Elev	<b>4000</b> <b>367</b> <b>367</b>
--	------------------------	-----------------------------	---

RNAV (GPS) RWY 33

COULTER FIELD (CFD)

RNP APCH.	MISSED APPROACH: Climb to 2500 direct NUCIB and hold.
NA	Baro-VNAV NA. Use College Station altimeter setting; when not received, use Caldwell altimeter setting and increase all DA 31 feet and all MDA 40 feet.

AWOS-3PT <b>125.975</b>	CLL ASOS <b>126.85</b>	HOUSTON APP CON <b>134.3 360.85</b>	UNICOM <b>123.0 (CTAF) 0</b>
----------------------------	---------------------------	--	---------------------------------



2500	NUCIB	VGSI and RNAV glidepath not coincident (VGSI Angle 3.50/TCH 40).			
*LNAV only.	OROCE 2.8 NM to RW33	TEYUP 2000	WOTPO		
RW33		1280*	328°	2000	GP 3.00° TCH 40
2.8 NM		2.2 NM	5.9 NM		
CATEGORY	A	B	C	D	
LPV DA	642-1	275 (300-1)	NA		
LNAV/VNAV DA	642-1	275 (300-1)	NA		
LNAV MDA	880-1	513 (600-1)	NA		