

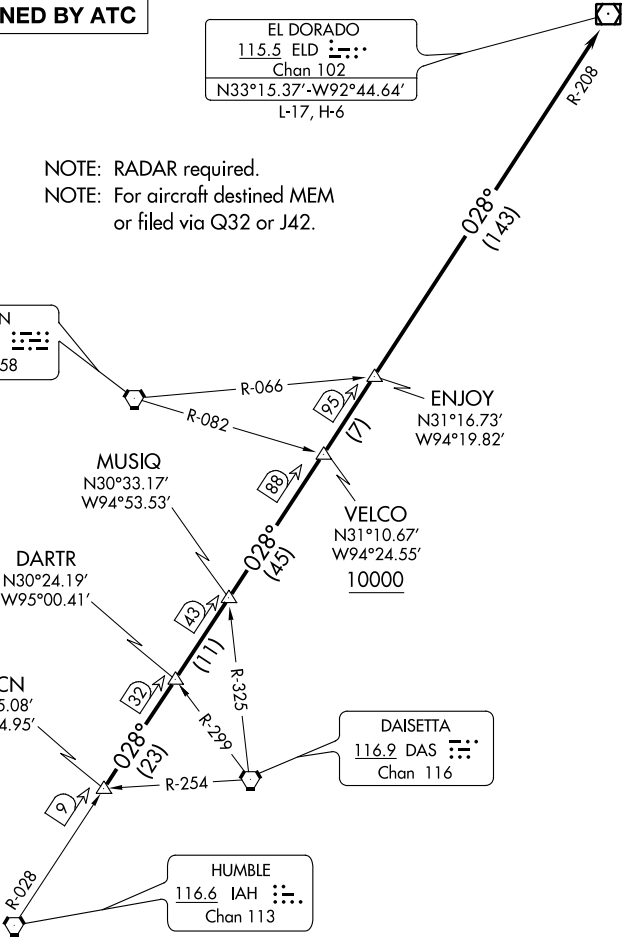
ASOS
119.925
CLNC DEL
125.2
CTAF
123.0
HOUSTON DEP CON
134.45 284.0

TOP ALTITUDE:
ASSIGNED BY ATC

EL DORADO
115.5 ELD
Chan 102
N33°15.37'-W92°44.64'
L-17, H-6

NOTE: RADAR required.
NOTE: For aircraft destined MEM
or filed via Q32 or J42.

LUFKIN
112.1 LFK
Chan 58



TAKEOFF MINIMUMS
Rwys 17, 35: Standard.

NOTE: Chart not to scale.



DEPARTURE ROUTE DESCRIPTION

TAKEOFF ALL RWYS: When entering controlled airspace, climb on assigned heading for RADAR vectors to RAEEN INT. Maintain ATC assigned altitude. Expect filed altitude 10 minutes after departure, thence. . . .
... on IAH R-028 and the ELD R-208 to ELD VOR/DME, cross VELCO INT at or above 10000.