

AL-6453 (FAA)

KARRR SIX DEPARTURE (RNAV)

TEXAS GULF COAST RGNL (LBX)  
ANGLETON/LAKE JACKSON, TEXAS

**TOP ALTITUDE:  
ASSIGNED BY ATC**

NOTE: Chart not to scale.

(NARRATIVE ON FOLLOWING PAGE)

SC-5, 03 DEC 2020 to 31 DEC 2020

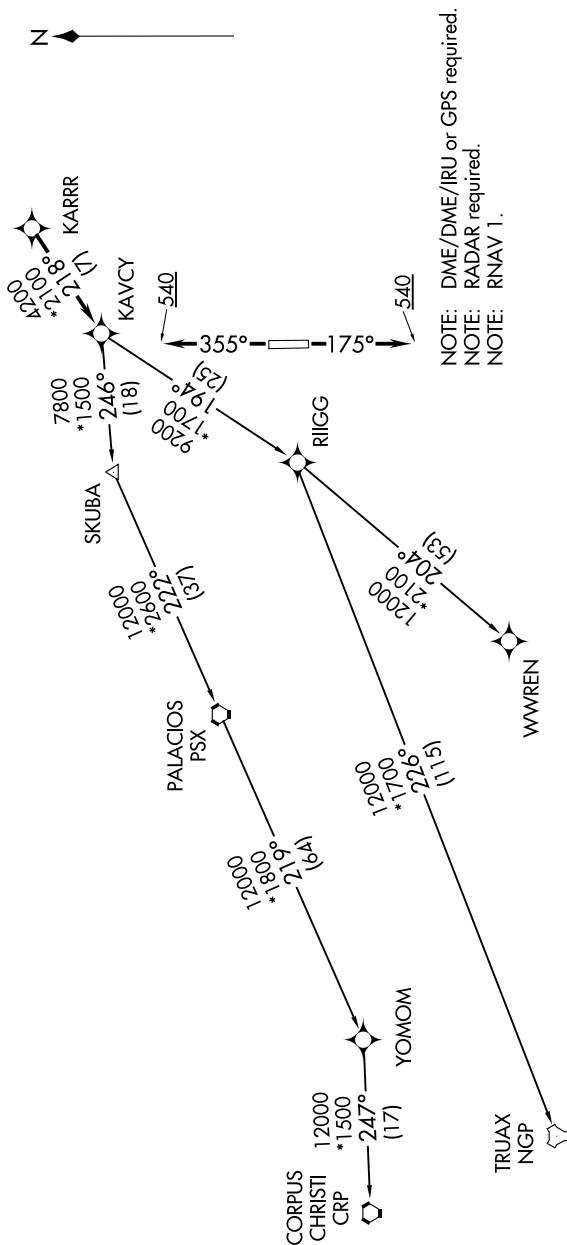
ASOS  
1119.925  
CTAF  
123.0  
CLINC DELL  
125.2  
HOUSTON  
134.45 2

HOUSTON DEP CON  
134.45 284.0

## TAKEOFF MINIMUMS

Rwys 17, 35:

Standard with minimum climb of 500' per NM to 540.



NOTE: DME/DME/IRU or GPS required.  
NOTE: RADAR required.  
NOTE: RNAV 1.

## KARRR SIX DEPARTURE (RNAV)

(KARRR6.KARRR) 05DEC19

ANGLETON/LAKE JACKSON, TEXAS  
TEXAS GULF COAST RGNL (LBX)