

WAAS  
CH **77516**  
**W35A**

APP CRS  
**355°**

Rwy Idg  
TDZE **25**  
Apt Elev **25**

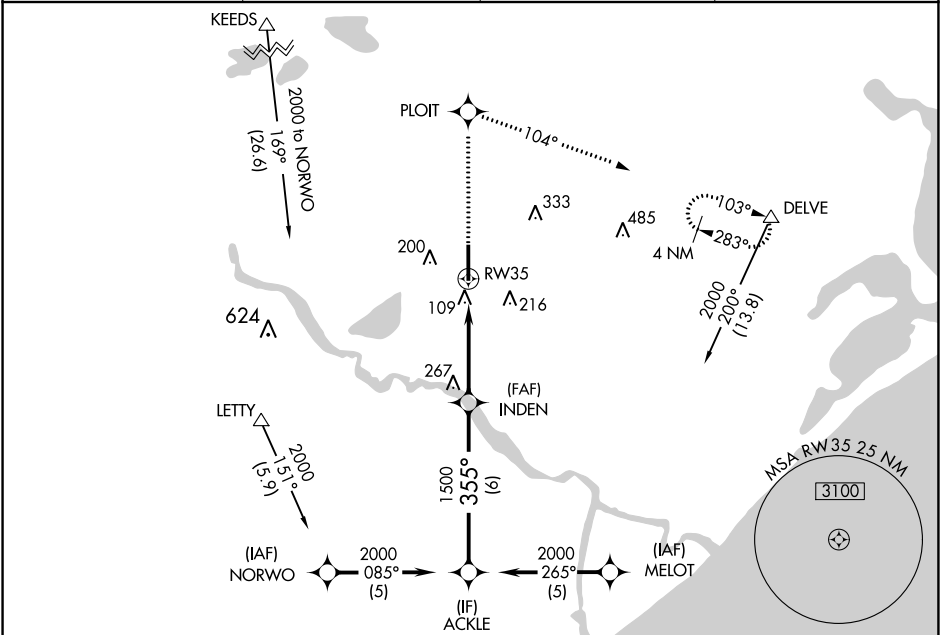
**RNAV (GPS) RWY 35**

TEXAS GULF COAST RGNL (LBX)

**⚠** DME/DME RNP-0.3 NA. Baro-VNAV NA below -16°C (4°F). When local altimeter setting not received, use William P. Hobby altimeter setting and increase all DAs/MDAs 100 feet and Circling Cat D visibility ¼ SM. Baro-VNAV and VDP NA when using William P. Hobby altimeter setting. Circling NA east of Rwy 17-35.

**MISSED APPROACH:** Climb to 2000 direct PLOIT and right turn via 104° track to DELVE and hold.

ASOS <b>119.925</b>	HOUSTON APP CON <b>134.45 284.0</b>	CLNC DEL <b>125.2</b>	UNICOM <b>123.0 (CTAF) 0</b>
------------------------	--	--------------------------	---------------------------------



ELEV 25

TDZE 25

Procedure Turn NA  
GP 3.00°  
TCH 50

ACKLE

INDEN

RW35

DELVE

\*1 NM to RW35

\*RNAV only.

CATEGORY	A	B	C	D
LPV DA		275-¾	250 (300-¾)	
RNAV/VNAV DA		428-1½	403 (500-1½)	
RNAV MDA		420-1	395 (400-1)	420-1¼ 395 (400-1¼)
CIRCLING	480-1½ 455 (500-1½)	500-1½	475 (500-1½)	620-2 595 (600-2)

MIRL Rwy 17-35 0

355° to RW35