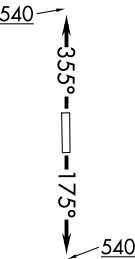
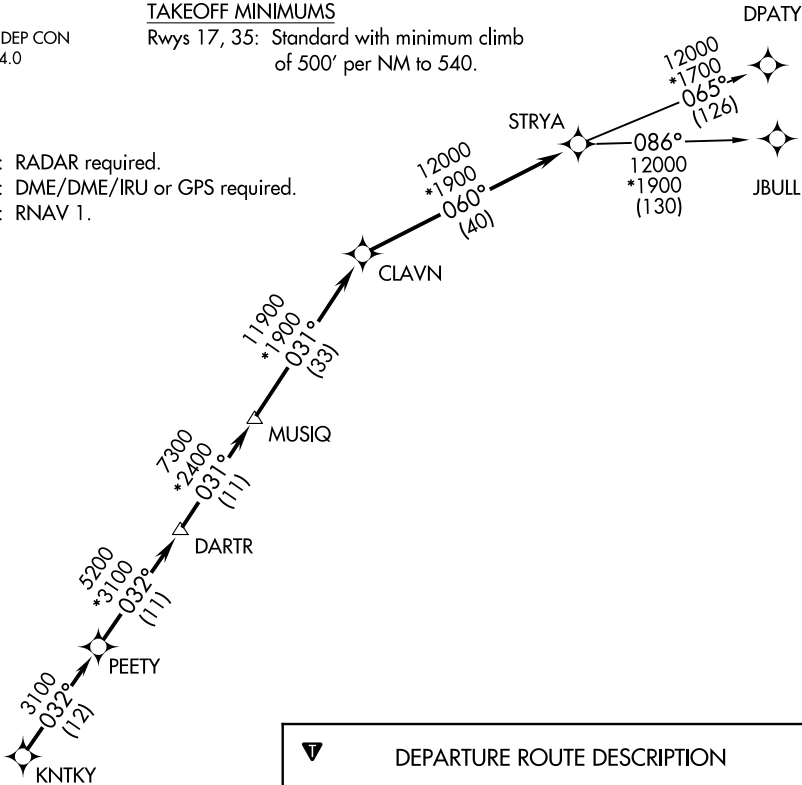


ASOS
119.925
CTAF
123.0
CLNC DEL
125.2
HOUSTON DEP CON
134.45 284.0

TOP ALTITUDE: ASSIGNED BY ATC

TAKEOFF MINIMUMS
Rwys 17, 35: Standard with minimum climb
of 500' per NM to 540.

NOTE: RADAR required.
NOTE: DME/DME/IRU or GPS required.
NOTE: RNAV 1.



DEPARTURE ROUTE DESCRIPTION

TAKEOFF RWY 17: Climb heading 175° to 540 for
RADAR vectors to KNTKY, thence . . .
TAKEOFF RWY 35: Climb heading 355° to 540 for
RADAR vectors to KNTKY, thence . . .

. . . on track 032° to PEETY, then on track 032° to
DARTR, then on track 031° to MUSIQ, then on track
031° to CLAVN, then on track 060° to STRYA, then
on (transition). Maintain ATC assigned altitude.
Expect filed altitude 10 minutes after departure.

DPATY TRANSITION (STRYA7.DPATY)
JBULL TRANSITION (STRYA7.JBULL)

NOTE: Chart not to scale.