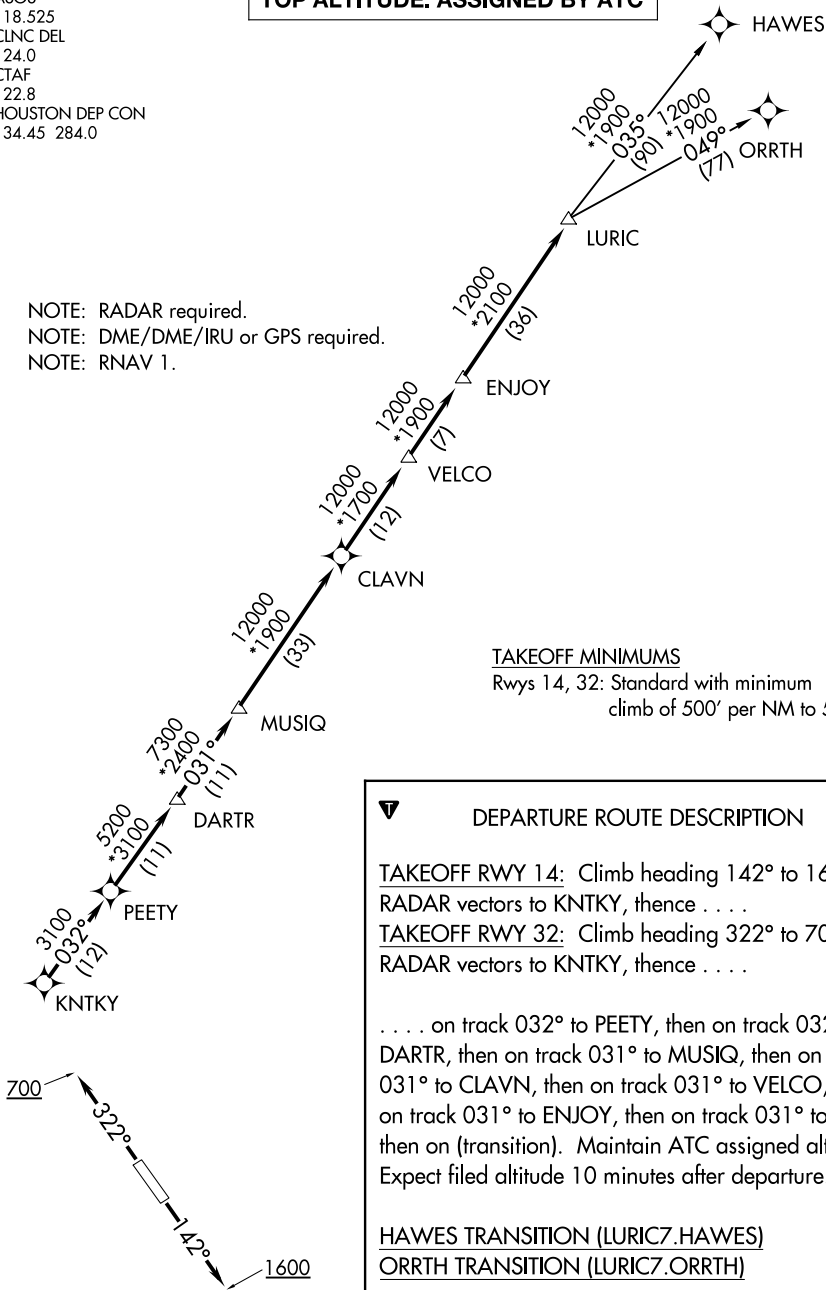


ASOS
118.525
CLNC DEL
124.0
CTAF
122.8
HOUSTON DEP CON
134.45 284.0

TOP ALTITUDE: ASSIGNED BY ATC

NOTE: RADAR required.
NOTE: DME/DME/IRU or GPS required.
NOTE: RNAV 1.



DEPARTURE ROUTE DESCRIPTION

TAKEOFF RWY 14: Climb heading 142° to 1600 for
RADAR vectors to KNTKY, thence
TAKEOFF RWY 32: Climb heading 322° to 700 for
RADAR vectors to KNTKY, thence

. . . . on track 032° to PEETY, then on track 032° to
DARTR, then on track 031° to MUSIQ, then on track
031° to CLAVN, then on track 031° to VELCO, then
on track 031° to ENJOY, then on track 031° to LURIC,
then on (transition). Maintain ATC assigned altitude.
Expect filed altitude 10 minutes after departure.

HAWES TRANSITION (LURIC7.HAWES)
ORRTH TRANSITION (LURIC7.ORRTH)

NOTE: Chart not to scale.