

ASOS
118.525
CLNC DEL
124.0
CTAF
122.8
HOUSTON DEP CON
134.45 284.0

TOP ALTITUDE:
ASSIGNED BY ATC

NOTE: RADAR required.
NOTE: DME/DME/IRU or GPS required.
NOTE: RNAV 1.

TAKEOFF MINIMUMS

Rwy 14, 32: Standard with minimum
climb of 500' per NM to 560.

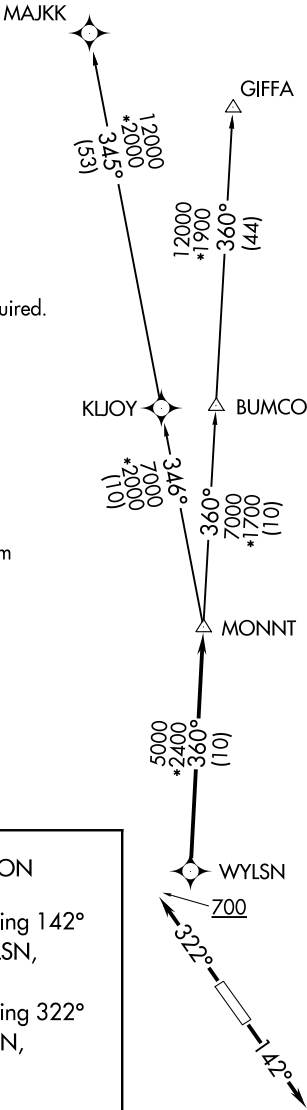
DEPARTURE ROUTE DESCRIPTION

TAKEOFF RWY 14: Climb on heading 142°
to 1600 for RADAR vectors to WYLSN,
thence. . .

TAKEOFF RWY 32: Climb on heading 322°
to 700 for RADAR vectors to WYLSN,
thence. . .

. . . on track 360° to MONNT, then on
(transition). Maintain ATC assigned altitude.
Expect filed altitude 10 minutes after departure.

GIFFA TRANSITION (WYLSN7.GIFFA)
MAJKK TRANSITION (WYLSN7.MAJKK)



NOTE: Chart not to scale.

SC-5, 03 DEC 2020 to 31 DEC 2020

SC-5, 03 DEC 2020 to 31 DEC 2020