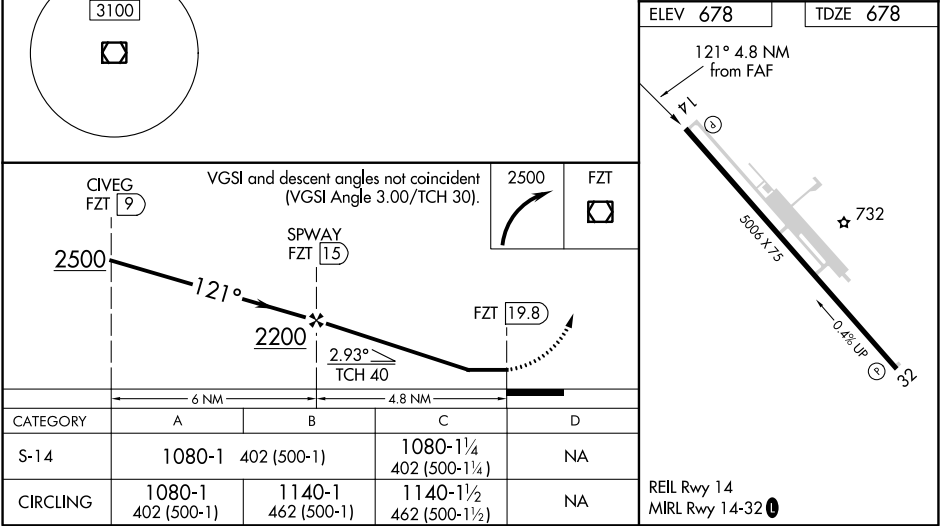
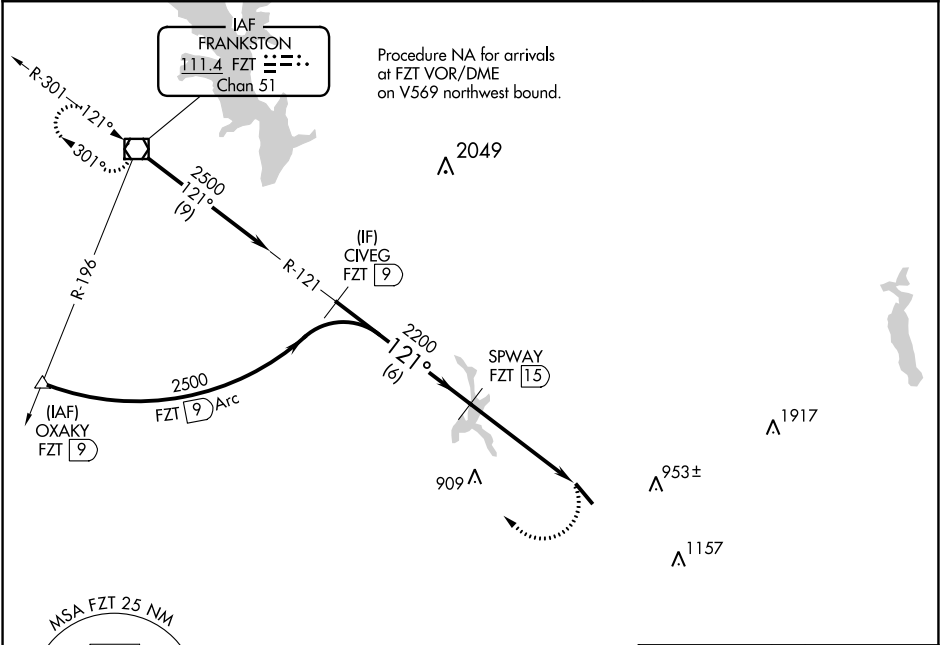


VOR/DME FZT	APP CRS	Rwy Idg	5006
111.4	121°	TDZE	678
Chan 51		Apt Elev	678

VOR RWY 14  
CHEROKEE COUNTY (JSO)

DME required.	MISSED APPROACH: Climbing right turn to 2500 direct FZT VOR/DME and hold.
<div><div></div><div></div></div>	

AWOS-3 119.075	LONGVIEW APP CON * 128.75 379.15	UNICOM 122.7 (CTAF) 0
-------------------	-------------------------------------	--------------------------



SC-5, 03 DEC 2020 to 31 DEC 2020

SC-5, 03 DEC 2020 to 31 DEC 2020