

(ELD9.ELD) 18032

AL-6575 (FAA)

HOUSTON-SOUTHWEST (AXH)  
HOUSTON, TEXAS

EL DORADO NINE DEPARTURE

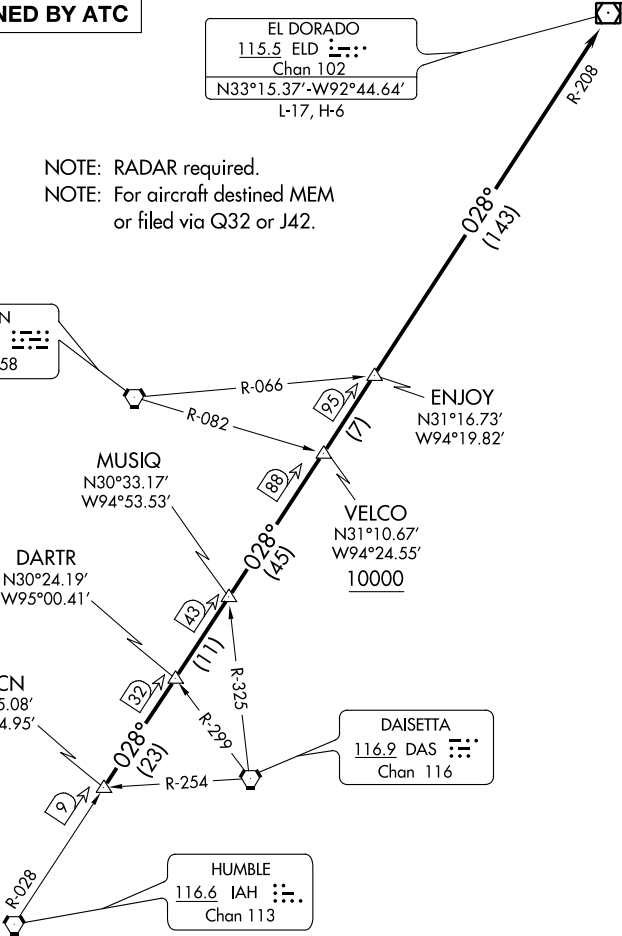
AWOS-3  
123.625  
CLNC DEL  
120.8  
CTAF  
123.0  
HOUSTON DEP CON  
123.8 257.7

TOP ALTITUDE:  
ASSIGNED BY ATC

EL DORADO  
115.5 ELD  
Chan 102  
N33°15.37'-W92°44.64'  
L-17, H-6

NOTE: RADAR required.  
NOTE: For aircraft destined MEM  
or filed via Q32 or J42.

LUFKIN  
112.1 LFK  
Chan 58



TAKEOFF MINIMUMS  
Rwys 9, 27: Standard.

NOTE: Chart not to scale.

(NARRATIVE ON FOLLOWING PAGE)

EL DORADO NINE DEPARTURE  
(ELD9.ELD) 22JUN17

HOUSTON, TEXAS  
HOUSTON-SOUTHWEST (AXH)

SC-5, 03 DEC 2020 to 31 DEC 2020

SC-5, 03 DEC 2020 to 31 DEC 2020