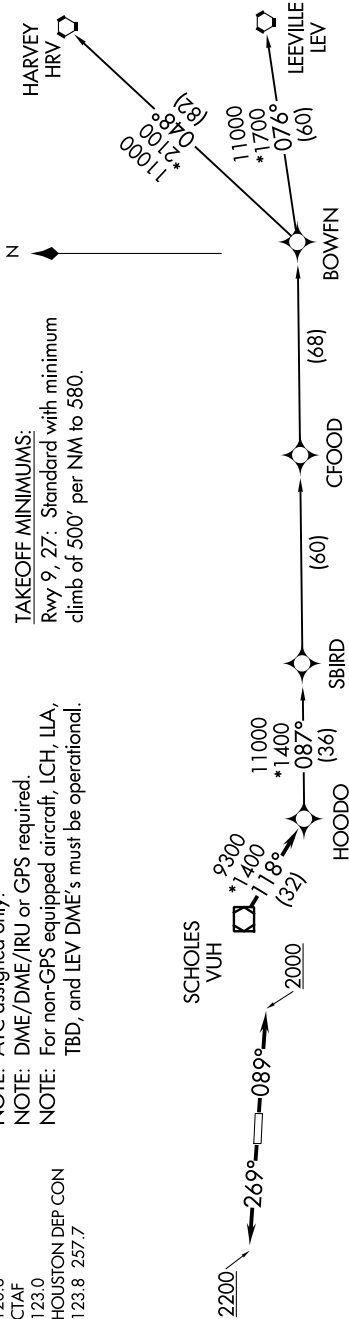


TOP ALTITUDE:  
ASSIGNED BY ATC

- NOTE: RNAV 1.
- NOTE: RADAR required.
- NOTE: ATC assigned only.
- NOTE: DME/DME/IRU or GPS required.
- NOTE: For non-GPS equipped aircraft, LCH, ILLA, TBD, and LEV DME's must be operational.

AWOS-3  
126.325  
CLNC DEL  
120.8  
CTAF  
123.0  
HOUSTON DEP CON  
123.8 257.7

TAKEOFF MINIMUMS:  
Rwy 9, 27: Standard with minimum  
climb of 500' per NM to 580.



NOTE: Chart not to scale.

DEPARTURE ROUTE DESCRIPTION

TAKEOFF RWY 9: Climb heading 089° to 2000, for RADAR vectors to VUH VOR/DME, thence . . . .  
TAKEOFF RWY 27: Climb heading 269° to 2200, for RADAR vectors to VUH VOR/DME, thence . . . .  
. . . . on track 118° to HOODO, then on (transition). Maintain ATC assigned altitude.  
Expect filed altitude 10 minutes after departure.

- BOWFN TRANSITION (HOODO06.BOWFN)
- CFOOD TRANSITION (HOODO06.CFOOD)
- HARVEY TRANSITION (HOODO06.HRV)
- LEEVILLE TRANSITION (HOODO06.LEV)
- SBIRD TRANSITION (HOODO06.SBIRD)