

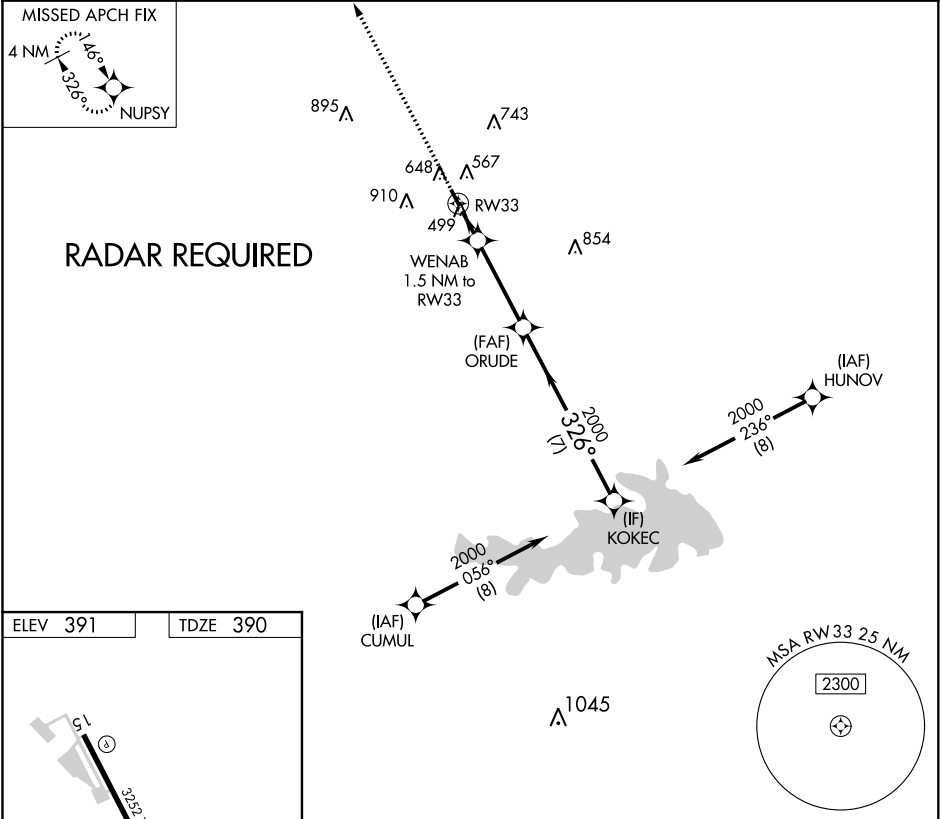
APP CRS	Rwy Idg	3010
326°	TDZE	390
	Apt Elev	391

RNAV (GPS) RWY 33
CALDWELL MUNI (RWV)

⚠ When local altimeter setting not received, use College Station altimeter setting and increase all MDA 60 feet. Circling NA east of Rwy 15-33. DME/DME RNP-0.3 NA. Procedure NA at night. Rwy 33 helicopter visibility reduction below 1 SM NA.

MISSED APPROACH: Climb to 2500 direct NUPSY and hold.

AWOS-3 118.35	HOUSTON APP CON 134.3 360.85	CTAF 122.9 0
------------------	---------------------------------	------------------------



ELEV 391 TDZE 390

MRL Rwy 15-33 **0**

2500 NUPSY

WENAB 1.5 NM to RW33

ORUDE

KOKEC

RW33

920

3.24°

TCH 40

1.5 NM 3.5 NM 7 NM

326° 2000

CATEGORY	A	B	C	D
LNAV MDA	760-1	370 (400-1)	NA	
CIRCLING	1000-1	609 (700-1)	NA	

SC-5, 03 DEC 2020 to 31 DEC 2020

SC-5, 03 DEC 2020 to 31 DEC 2020