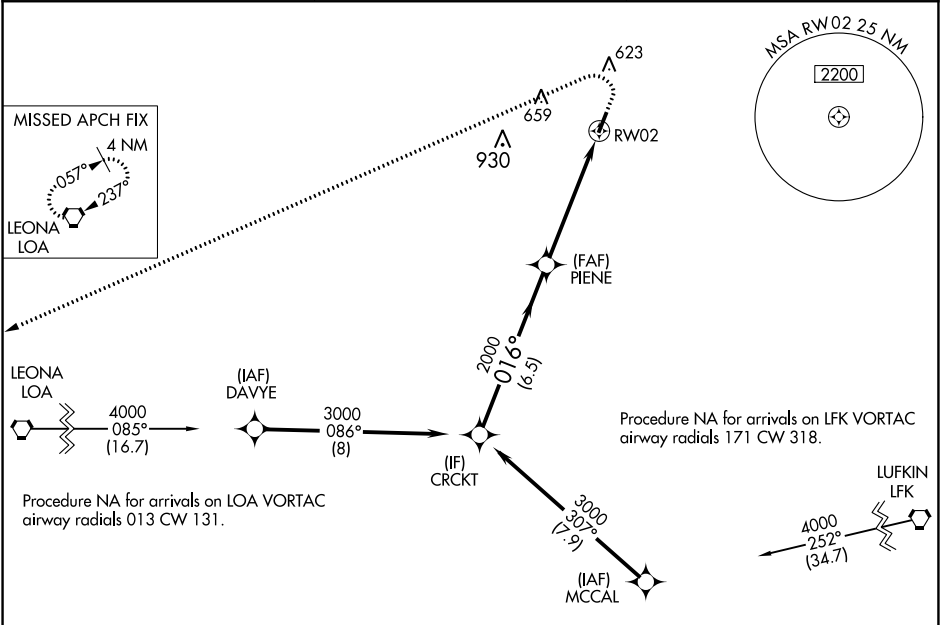


WAAS CH <b>53526</b> <b>W02A</b>	APP CRS <b>016°</b>	Rwy Idg TDZE Apt Elev	<b>4000</b> <b>341</b> <b>348</b>
--	------------------------	-----------------------------	---

**RNAV (GPS) RWY 2**  
HOUSTON COUNTY (DKR)

<div><div><div>V</div><div>A</div></div></div> <div>DME/DME RNP-0.3 NA. When local altimeter setting not received, use Palestine altimeter setting and increase all MDA 100 feet. Procedure NA at night. Helicopter visibility reduction below 1 SM NA.</div>	MISSED APPROACH: Climb to 1000 then climbing left turn to 4000 direct LOA VORTAC and hold.	
AWOS-3 118.775	HOUSTON CENTER 134.8 269.6	CTAF 122.9 0



					ELEV 348	TDZE 341
CATEGORY	A	B	C	D		
LP MDA	820-1	479 (500-1)	NA			
LNAV MDA	840-1	499 (500-1)	NA			
CIRCLING	880-1	532 (600-1)	NA			

SC-5, 03 DEC 2020 to 31 DEC 2020

SC-5, 03 DEC 2020 to 31 DEC 2020