

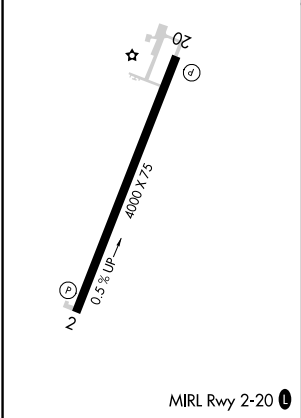
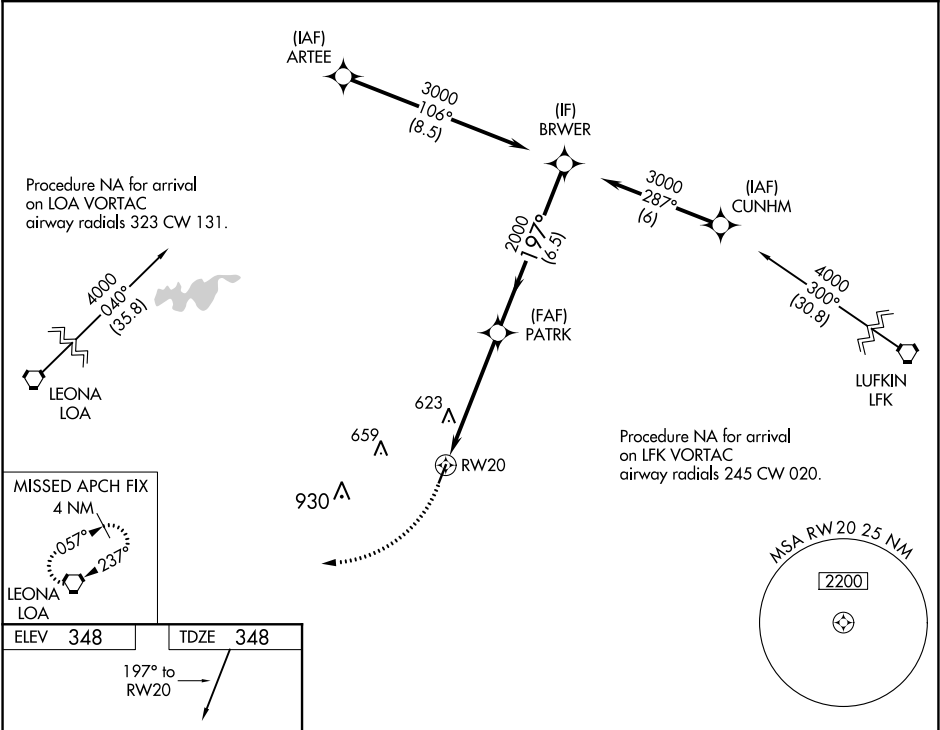




WAAS CH 65826 W20A	APP CRS 197°	Rwy Idg TDZE Apt Elev	4000 348 348
--	------------------------	-----------------------------	---

RNAV (GPS) RWY 20
HOUSTON COUNTY (DKR)

RNP APCH.	MISSED APPROACH: Climbing right turn to 4000 direct LOA VORTAC and hold.
 Procedure NA at night. Rwy 20 helicopter visibility reduction below 1 SM NA.	

AWOS-3 118.775	HOUSTON CENTER 134.8 269.6	CTAF 122.9 
--------------------------	--------------------------------------	--



4000	LOA	Visual Segment - Obstacles.			
					
		BRWER 3000			
		PATRK 2000			
		RW20			
		5.1 NM 6.5 NM			
CATEGORY	A	B	C	D	
LP MDA	880-1	532 (600-1)	NA		
LNAV MDA	900-1	552 (600-1)	NA		
 CIRCLING	900-1 552 (600-1)	980-1 632 (700-1)	NA		

SC-5, 03 DEC 2020 to 31 DEC 2020

SC-5, 03 DEC 2020 to 31 DEC 2020