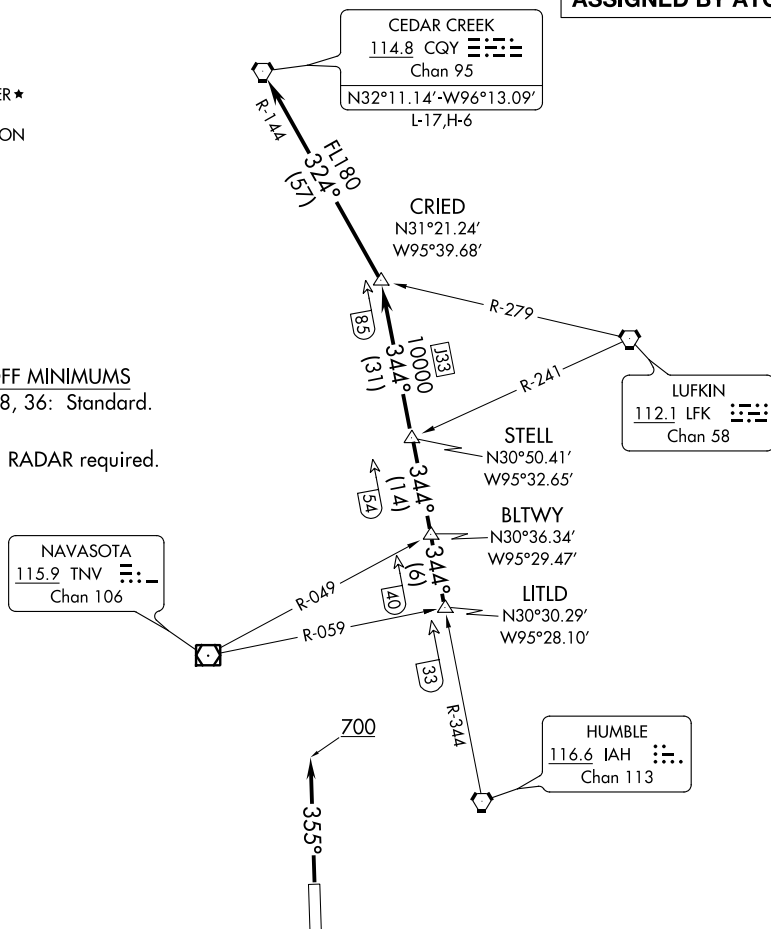


CRIED NINE DEPARTURE

HOUSTON EXECUTIVE (TME)
HOUSTON, TEXAS

**TOP ALTITUDE:
ASSIGNED BY ATC**

NOTE: RADAR required.



NOTE: Chart not to scale.

DEPARTURE ROUTE DESCRIPTION

TAKEOFF RWY 18: When entering controlled airspace, climb on assigned heading for **RADAR** vectors to **LITLD INT**. Maintain ATC assigned altitude. Expect filed altitude 10 minutes after departure, thence. . . .

TAKEOFF RWY 36: Climb heading 355° to 700 before turning. When entering controlled airspace, climb on assigned heading for RADAR vectors to LITLD INT. Maintain ATC assigned altitude. Expect filed altitude 10 minutes after departure, thence. . .

... on IAH R-344 to STELL INT, then on IAH R-344 to CRIED INT then left turn on CQY R-144 to CQY VORTAC.

CRIED NINE DEPARTURE

HOUSTON, TEXAS
HOUSTON EXECUTIVE (TME)

(CRIED9.CRIED) 22JUN17

SC-5, 03 DEC 2020 to 31 DEC 2020