

GIFFA NINE DEPARTURE

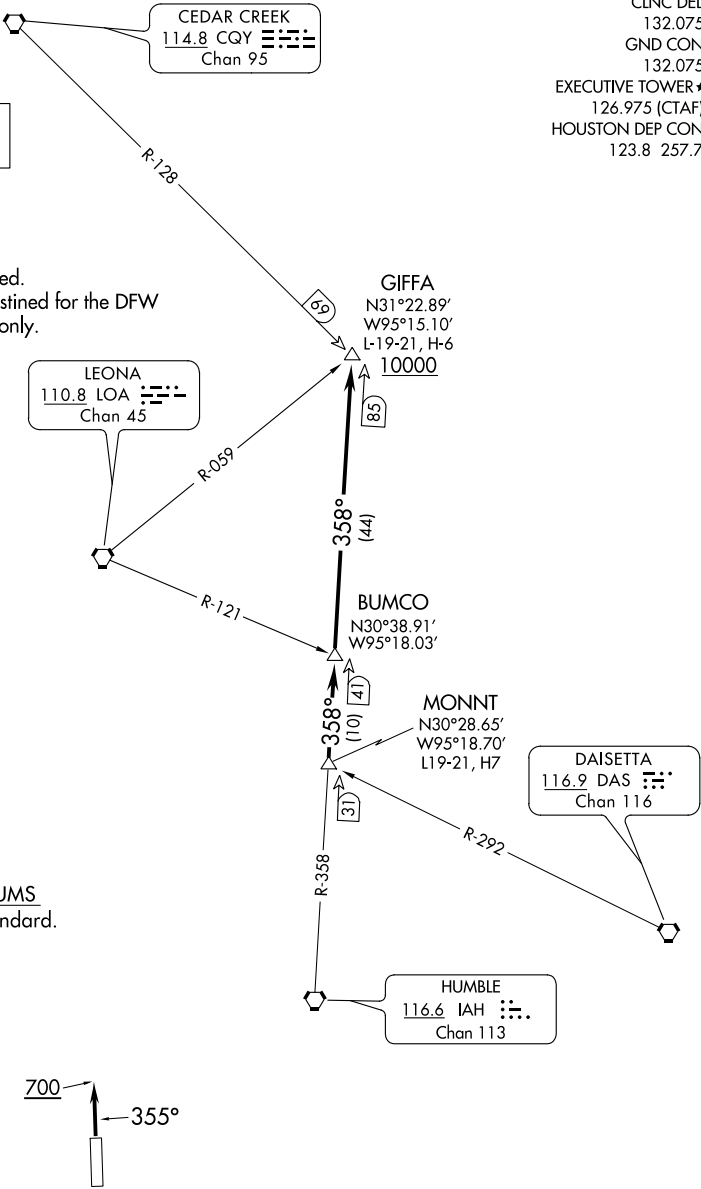
AL-10328 (FAA)

HOUSTON EXECUTIVE (TME)
HOUSTON, TEXAS

ATIS
119.525
CLNC DEL
132.075
GND CON
132.075
EXECUTIVE TOWER★
126.975 (CTAF)
HOUSTON DEP CON
123.8 257.7

TOP ALTITUDE:
ASSIGNED BY ATC

NOTE: RADAR required.
NOTE: For aircraft destined for the DFW
terminal area only.



TAKEOFF MINIMUMS
Rwys 18, 36: Standard.

(NARRATIVE ON FOLLOWING PAGE)

NOTE: Chart not to scale.

GIFFA NINE DEPARTURE