

(INDIE7.INDIE) 19115

AL-10328 (FAA)

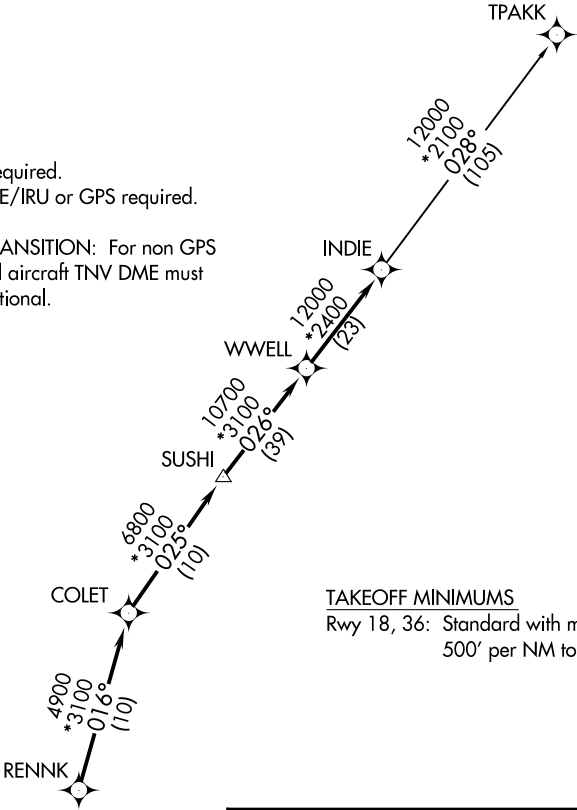
HOUSTON EXECUTIVE (TME)
HOUSTON, TEXAS

INDIE SEVEN DEPARTURE (RNAV)

ATIS
119.525
CLNC DEL
132.075
EXECUTIVE TOWER★
126.975 (CTAF)
HOUSTON DEP CON
123.8 257.7

TOP ALTITUDE:
ASSIGNED BY ATC

NOTE: RADAR required.
NOTE: DME/DME/IRU or GPS required.
NOTE: RNAV 1.
NOTE: TPAKK TRANSITION: For non GPS
equipped aircraft TNV DME must
be operational.



TAKEOFF MINIMUMS

Rwy 18, 36: Standard with minimum climb of
500' per NM to 680.



DEPARTURE ROUTE DESCRIPTION

TAKEOFF RWY 18: Climb heading 175° to 680
for RADAR vectors to RENNK, then . . .

TAKEOFF RWY 36: Climb heading 355° to 680
for RADAR vectors to RENNK, then . . .

. . . on track 016° to COLET, then on track 025°
to SUSHI, then on track 026° to WWELL, then on
track 026° to INDIE, then on (transition).
Maintain ATC assigned altitude. Expect filed
altitude 10 minutes after departure.

TPAKK TRANSITION (INDIE7.TPAKK)

NOTE: Chart not to scale.

INDIE SEVEN DEPARTURE (RNAV)

(INDIE7.INDIE) 25APR19

HOUSTON, TEXAS
HOUSTON EXECUTIVE (TME)

SC-5, 03 DEC 2020 to 31 DEC 2020

SC-5, 03 DEC 2020 to 31 DEC 2020