

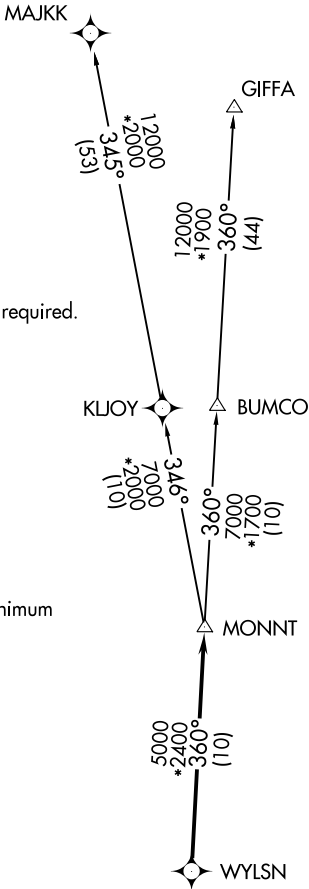
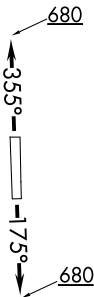
ATIS
119.525
CLNC DEL
132.075
CTAF
126.975
HOUSTON DEP CON
123.8 257.7

TOP ALTITUDE:
ASSIGNED BY ATC

NOTE: RADAR required.
NOTE: DME/DME/IRU or GPS required.
NOTE: RNAV 1.

TAKEOFF MINIMUMS

Rwy 18, 36: Standard with minimum
climb of 500' per NM to 680.



DEPARTURE ROUTE DESCRIPTION

TAKEOFF RWY 18: Climb on heading 175° to 680 for
RADAR vectors to WYLSN, then. . .

TAKEOFF RWY 36: Climb on heading 355° to 680 for
RADAR vectors to WYLSN, then. . .

. . . on track 360° to MONNT, then on (transition).
Maintain ATC assigned altitude. Expect filed altitude
10 minutes after departure.

GIFFA TRANSITION (WYLSN7.GIFFA)
MAJJK TRANSITION (WYLSN7.MAJKK)

NOTE: Chart not to scale.

SC-5, 03 DEC 2020 to 31 DEC 2020

SC-5, 03 DEC 2020 to 31 DEC 2020