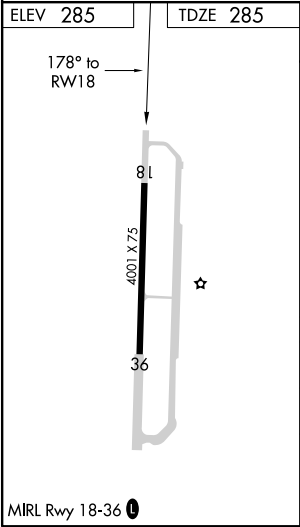
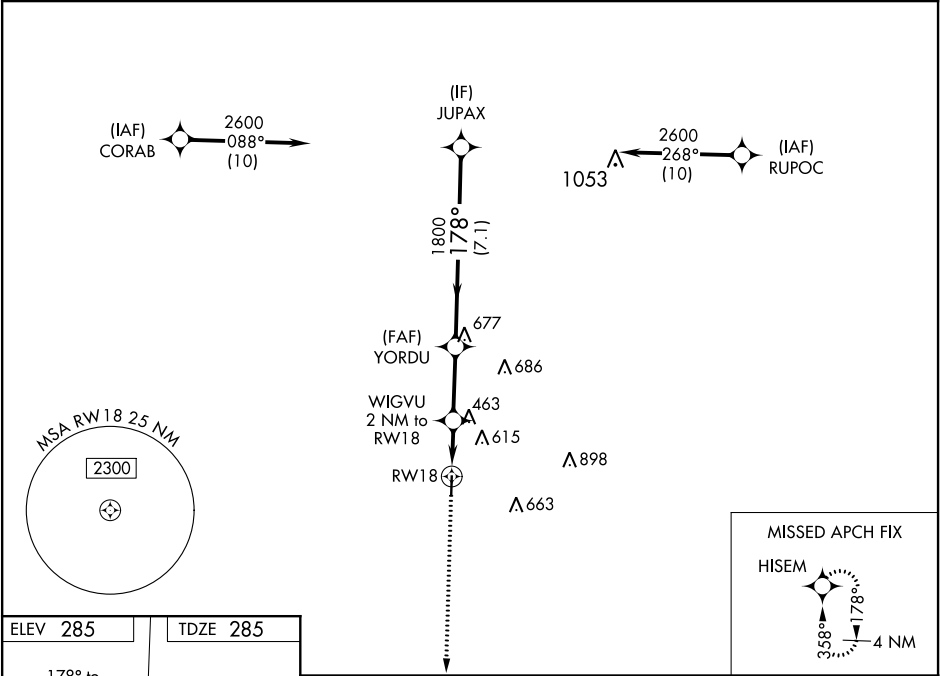


WAAS CH 50522 W18A	APP CRS 178°	Rwy Idg TDZE Apt Elev	4001 285 285
--	------------------------	-----------------------------	---

RNAV (GPS) RWY 18

HEARNE MUNI (LHB)

RNP APCH.		MISSED APPROACH: Climb to 2100 direct HISEM and hold.	
⚠ Baro-VNAV and VDP NA when using College Station altimeter setting. For uncompensated Baro-VNAV systems, LNAV/VNAV NA below -15°C or above 54°C.			
AWOS-3 118.675	HOUSTON APP CON 134.3 360.85	CTAF 122.9	123.3 0



2100

↑

HISEM

✦

*LNAV only.

WIGVU

2 NM to RW18

YORDU

1800

JUPAX

2600

178°

1800

GP 3.00°

TCH 40

960*

1.4 NM

0.6

2.6 NM

7.1 NM

RW18

1.4 NM

0.6

2.6 NM

7.1 NM

CATEGORY	A	B	C	D
LPV DA	485-¾ 200 (200-¾)			NA
LNAV/VNAV DA	583-1 298 (300-1)			NA
LNAV MDA	780-1	495 (500-1)	780-1⅜ 495 (500-1⅝)	NA
CIRCLING	800-1 515 (600-1)	880-1 595 (600-1)	920-1¼ 635 (700-1¼)	NA

SC-5, 03 DEC 2020 to 31 DEC 2020

SC-5, 03 DEC 2020 to 31 DEC 2020