

WAAS CH <b>87122</b> <b>W36A</b>	APP CRS <b>358°</b>	Rwy Idg TDZE Apt Elev	<b>4001</b> <b>284</b> <b>285</b>
--	------------------------	-----------------------------	---

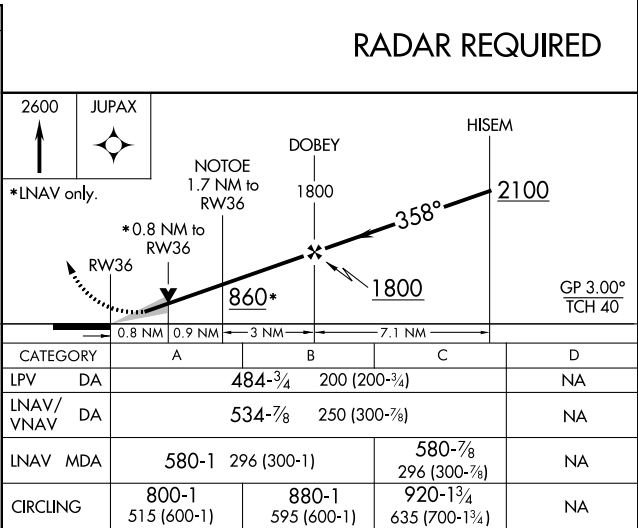
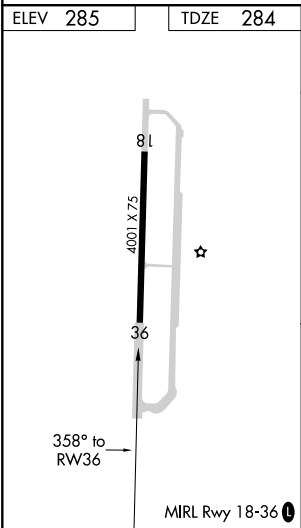
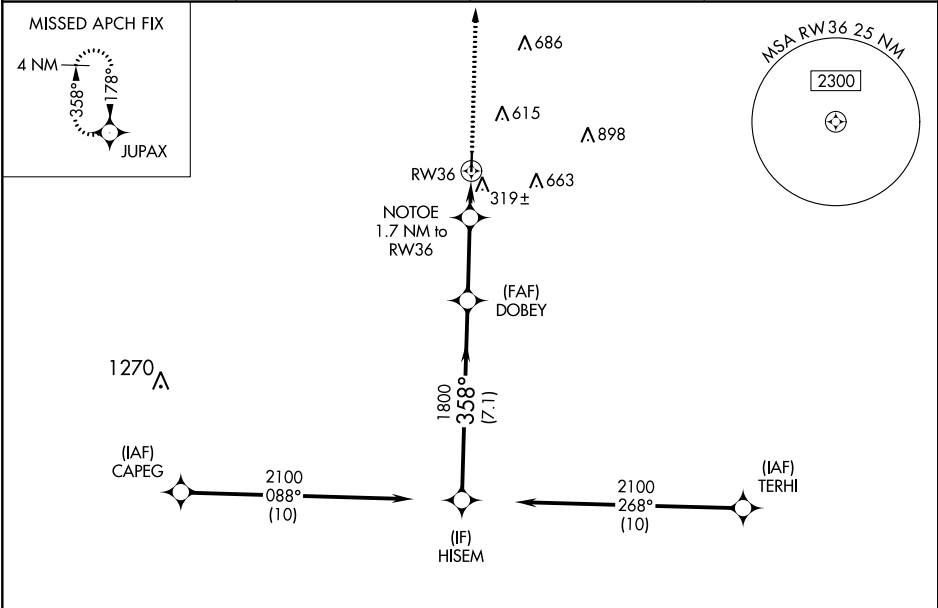
RNAV (GPS) RWY 36

HEARNE MUNI (LHB)

**⚠** For uncompensated Baro-VNAV systems, LNAV/VNAV NA below -15°C (5°F) or above 54°C (130°F). DME/DME RNP-0.3 NA. When local altimeter setting not received, use College Station altimeter setting and increase all DA 55 feet and all MDA 60 feet. Increase LPV, LNAV/VNAV all Cats and LNAV Cat C visibility ¼ mile. Increase Circling Cat C visibility ¼ mile. Baro-VNAV and VDP NA when using College Station altimeter setting.

MISSED APPROACH: Climb to 2600 direct JUPAX and hold.

AWOS-3 <b>118.675</b>	HOUSTON APP CON <b>134.3 360.85</b>	CTAF <b>122.9</b>	<b>123.3 0</b>
--------------------------	--	----------------------	----------------



SC-5, 03 DEC 2020 to 31 DEC 2020

SC-5, 03 DEC 2020 to 31 DEC 2020