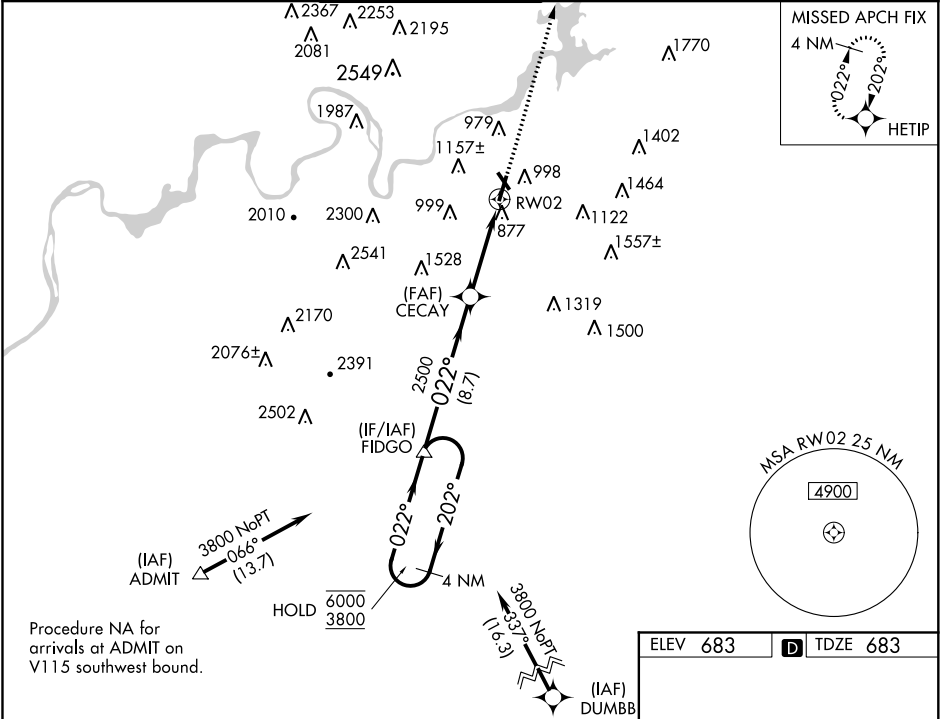


WAAS CH 65605 W02A	APP CRS 022°	Rwy Idg TDZE 683 Apt Elev 683
--	------------------------	---

RNAV (GPS) RWY 2

LOVELL FIELD (CHA)

RNP APCH.			MALSR	MISSED APPROACH: Climb to 3800 direct HETIP and hold.	
⚠ Circling Rwy 15, 33 NA at night. For uncompensated Baro-VNAV systems, LNAV/VNAV NA below -16°C or above 54°C. For inop ALS, increase LNAV/VNAV all Cats visibility to 1½ SM. **RVR 1800 authorized with use of FD or AP or HUD to DA.			⚠		
ATIS 119.85	CHATTANOOGA APP CON ★ 125.1 379.1	CHATTANOOGA TOWER ★ 118.3 (CTAF) 0 257.8	GND CON 121.7 348.6	CLNC DEL 120.95 348.6	UNICOM 122.95



4 NM Holding Pattern		VGSi and RNAV glidepath not coincident. (VGSi Angle 3.00/TCH 71).		3800	HETIP
FIDGO		CECAY		2500	
6000 ← 202° 3800 → 022°		2500		2500	
GP 3.00° TCH 51		2500		2500	
8.7 NM		4 NM		1.5 NM	
CATEGORY	A	B	C	D	
LPV DA**	883/24		200 (200-½)		
LNAV/VNAV DA	1197/60		514 (600-1¼)		
LNAV MDA	1200/24	517 (600-½)	1200/55	1200/60	
			517 (600-1)	517 (600-1¼)	
Ⓢ CIRCLING	1300-1	1340-1	1480-2¼	1580-3	
	617 (700-1)	657 (700-1)	797 (800-2¼)	897 (900-3)	

