

RNAV (GPS) RWY 18

APCH CRS	Rwy Idg	5184
180°	TDZE	754
	Arpt Elev	754

AL-151 [USA]

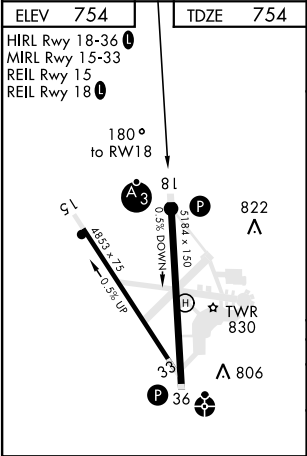
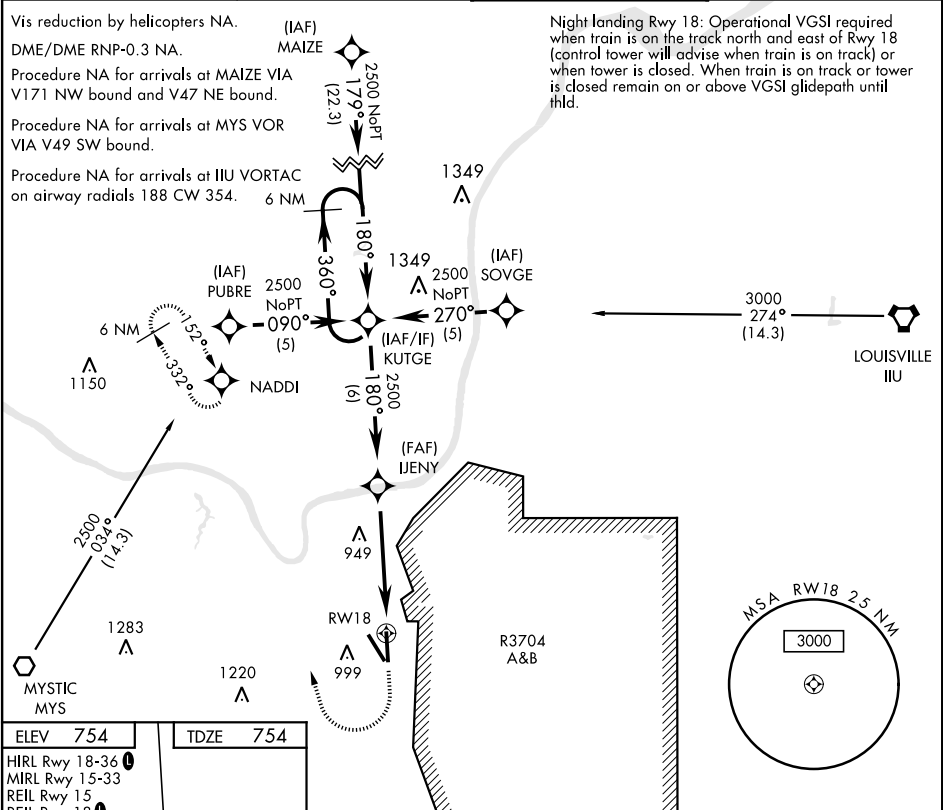
GODMAN AAF (KFTK)

**⚠** \* Circling not authorized E of Rwy 18-36.

SSALR

MISSED APPROACH: Climbing right to 2600, direct to NADDI and hold.

ATIS★ 109.6	LOUISVILLE APP CON 132.075 327.0	GODMAN TOWER★ 133.35 (CTAF) 0	GND CON 121.9 239.3
----------------	-------------------------------------	----------------------------------	------------------------



VGSi and descent angles not coincident				NADDI
CATEGORY	A	B	C	D
LNAV MDA	1200-1	445 (500-1)	1200-1¼ 445 (500-1¼)	1200-1½ 445 (500-1½)
CIRCLING *	1300-1	545 (600-1)	1300-1½ 545 (600-1½)	1320-2 565 (600-2)

RNAV (GPS) RWY 18

SE-1, 03 DEC 2020 to 31 DEC 2020

SE-1, 03 DEC 2020 to 31 DEC 2020