

VOR/DME RWY 18

VOR/DME FTK 109.6 Chan 33	APCH CRS 186°	Rwy ldg TDZE 5184 Arpt Elev 754
---	-------------------------	---

AL-151 [USA]

GODMAN AAF (KFTK)

- * When ALS inop, increase CAT CD visibility to 1½ mile.
 ** Circling NA E of Rwy 18-36.

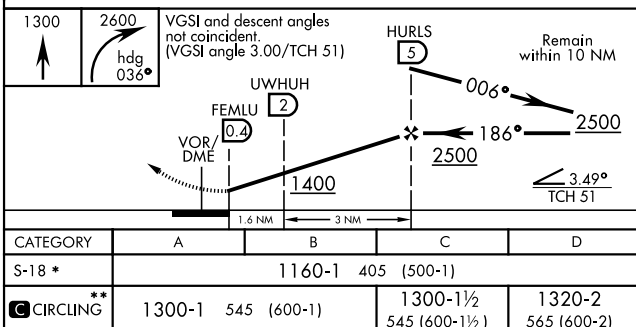
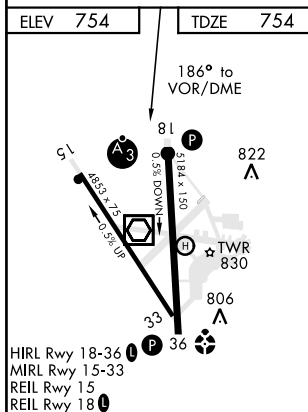
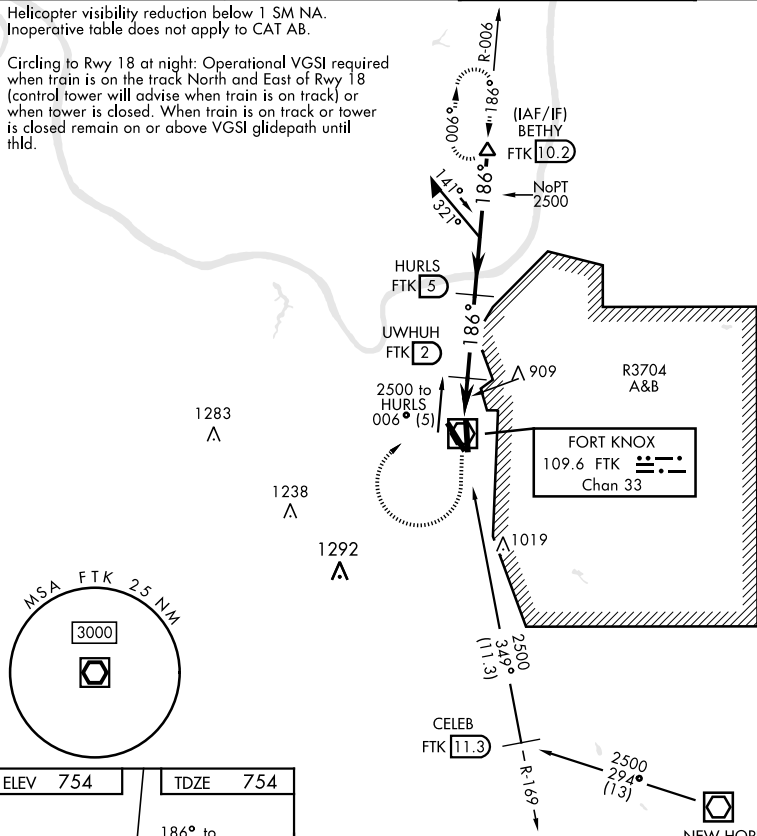


MISSED APPROACH: Climb to 1300, then climbing right turn to 2600 on heading 036° and FTK VOR/DME R-006 to BETHY INT/FTK 10.2 DME and hold.

ATIS★ 109.6	LOUISVILLE APP CON 132.075 327.0	GODMAN TOWER★ 133.35 (CTAF) 0	GND CON 121.9 239.3
-----------------------	--	---	-------------------------------

Helicopter visibility reduction below 1 SM NA.
Inoperative table does not apply to CAT AB.

Circling to Rwy 18 at night: Operational VGSIs required when train is on the track North and East of Rwy 18 (control tower will advise when train is on track) or when tower is closed. When train is on track or tower is closed remain on or above VGSi glidepath until thld.



FORT KNOX, KENTUCKY

37°54'N-85°58'W

GODMAN AAF (KFTK)

Amdt 1B 08OCT20

VOR/DME RWY 18