

ILS or LOC RWY 23L
MC GHEE TYSON (TYS)

MISSED APPROACH: Climb to 2000 then climbing right turn to 4000 on heading 240° and VXX VORTAC R-231 to GROSS INT/VXX 29.1 DME and hold.

NaPT for arrival at GOODL on V466-519 southwest bound.

2849 Δ

VOLUNTEER
116.4 VXX $\text{---}\text{---}\text{---}$
Chan 111

XEKEF
I-OXH 4.1

RKYTP
I-OXH 7.2
RADAR

1258 Δ

1255 Δ

1059 \pm Δ

1429 Δ

1544 Δ

1150 Δ

1317 \pm Δ

1047 Δ

LOCALIZER 110.75
I-OXH $\text{---}\text{---}\text{---}$
Chan 44 (Y)

(IF/IAF)
GOODL
I-OXH 15.6
VXX 7.2

VXX R-053

051°

233°

053°

2800

231°

(8.4)

3379 Δ

MISSED APCH FIX

GROSS
VXX 29.1

117.6 HCH
R-113
Chan 123

116.4 VXX
R-231
Chan 111

051°

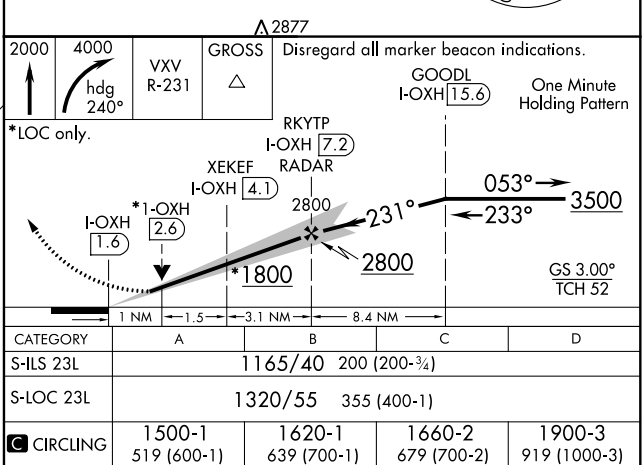
231°

MSA VXX 25 NM

5100

270°

DME or RADAR REQUIRED



MC GHEE TYSON (TYS)

ILS or LOC RWY 23L

SE-1, 03 DEC 2020 to 31 DEC 2020