

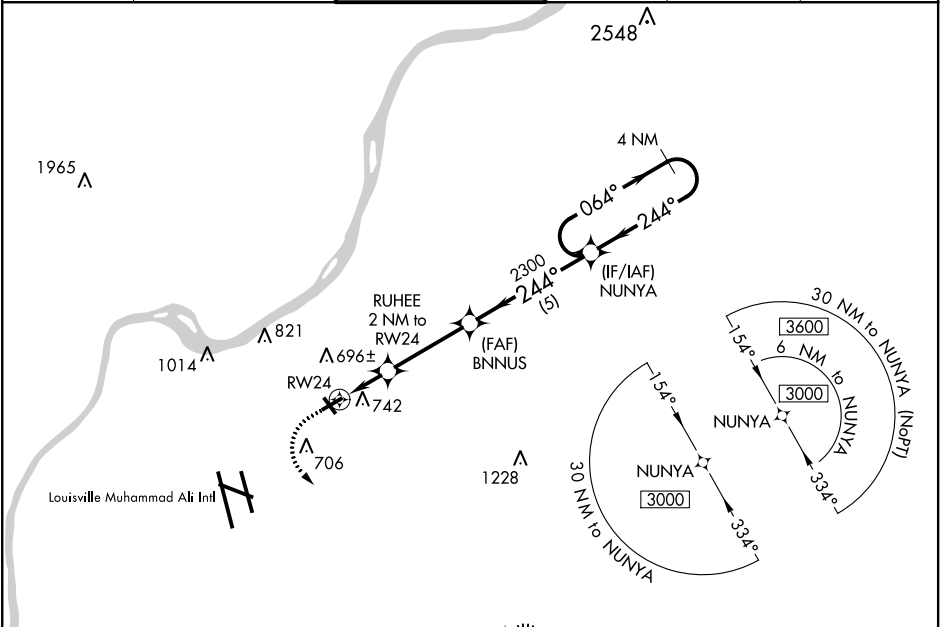
WAAS CH <b>58126</b> <b>W24A</b>	APP CRS <b>244°</b>	Rwy Idg TDZE Apt Elev	<b>3856</b> <b>545</b> <b>546</b>
--	------------------------	-----------------------------	---

RNAV (GPS) RWY 24

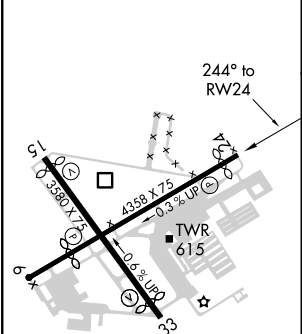
BOWMAN FIELD (LOU)

RNP APCH.		MISSED APPROACH: Climb to 1100 then climbing left turn to 3000 direct CAANT and hold.	
VDP NA with Louisville Muhammad Ali Intl altimeter setting. When local altimeter setting not received, use Louisville Muhammad Ali Intl altimeter setting. Rwy 24 helicopter visibility reduction below 3/4 SM NA. Circling Rwy 6, 15, 33 NA at night.			

ATIS <b>124.15</b>	LOUISVILLE APP CON <b>132.075 327.0</b>	BOWMAN TOWER ★ <b>119.5 (CTAF) 257.625</b>	GND CON <b>121.8</b>	CLNC DEL <b>118.9</b>	UNICOM <b>122.95</b>
-----------------------	--	---	-------------------------	--------------------------	-------------------------



ELEV <b>546</b>	<b>D</b>	TDZE <b>545</b>
-----------------	----------	-----------------



REIL Rws 24 and 33  
MIRL Rws 6-24 and 15-33

1100		3000	CAANT	VGSi and RNAV glidepath not coincident (VGSi Angle 3.50/TCH 27).	
*RNAV only		RUHEE 2 NM to RW24		4 NM Holding Pattern	
RW24		*1.1 NM to RW24		BNNUS 2300	
1220*		2300		NUNYA 3000	
1.1 NM		0.9 NM		3.4 NM	
5 NM					
CATEGORY	A	B	C	D	
LPV DA	830-7 <sup>8</sup>	285 (300-7 <sup>8</sup> )		NA	
RNAV/DA	1025-1 <sup>5</sup>	480 (500-1 <sup>5</sup> )		NA	
RNAV MDA	1000-1	455 (500-1)		NA	
CIRCLING	1060-1 514 (600-1)	1080-1 534 (600-1)		NA	

SE-1, 03 DEC 2020 to 31 DEC 2020

SE-1, 03 DEC 2020 to 31 DEC 2020