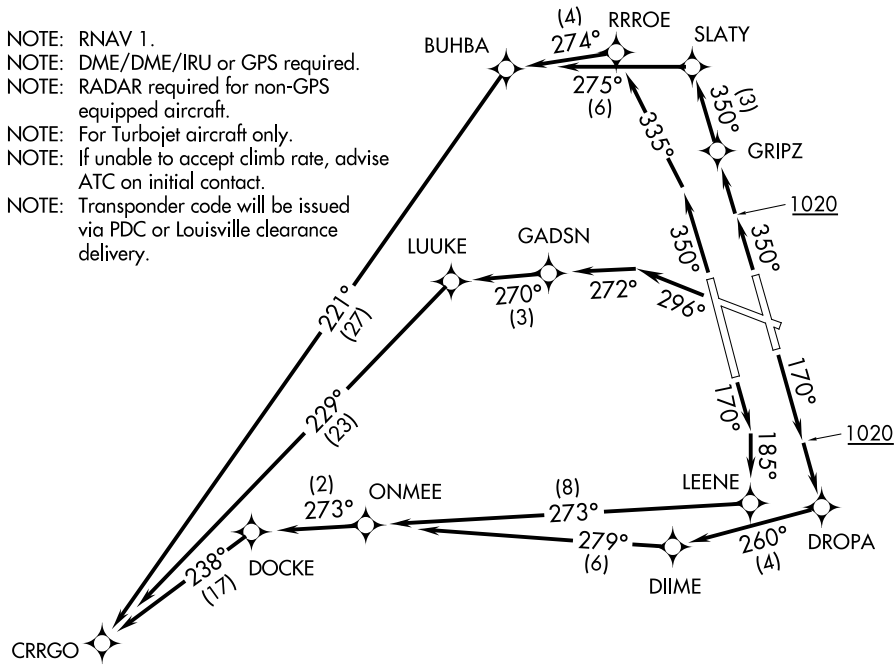


D-ATIS 118.725  
CLNC DEL  
126.1 275.8  
CPDLC  
GND CON  
121.7 348.6  
LOUISVILLE TOWER  
124.2 257.8  
LOUISVILLE DEP CON  
132.075 327.0

TAKEOFF MINIMUMS:  
Rwy 11: NA - ATC.  
Rwys 17L/R, 29, 35L/R: Standard with  
minimum climb of 500' per NM to 1020.

TOP ALTITUDE:  
5000

- NOTE: RNAV 1.  
NOTE: DME/DME/IRU or GPS required.  
NOTE: RADAR required for non-GPS equipped aircraft.  
NOTE: For Turbojet aircraft only.  
NOTE: If unable to accept climb rate, advise ATC on initial contact.  
NOTE: Transponder code will be issued via PDC or Louisville clearance delivery.



NOTE: Chart not to scale.

DEPARTURE ROUTE DESCRIPTION

- TAKEOFF RUNWAY 17L: Climb heading 170° to 1020, then direct DROPA, then on depicted route to CRRGO, thence....  
TAKEOFF RUNWAY 17R: Climb heading 170° to intercept course 185° to LEENE, then on depicted route to CRRGO, thence....  
TAKEOFF RUNWAY 29: Climb heading 296° to intercept course 272° to GADSN, then on depicted route to CRRGO, thence....  
TAKEOFF RUNWAY 35L: Climb heading 350° to intercept course 335° to RRROE, then on depicted route to CRRGO, thence....  
TAKEOFF RUNWAY 35R: Climb heading 350° to 1020, then direct GRIPZ, then on depicted route to CRRGO, thence....

....maintain 5000. Expect clearance to filed altitude 10 minutes after departure.