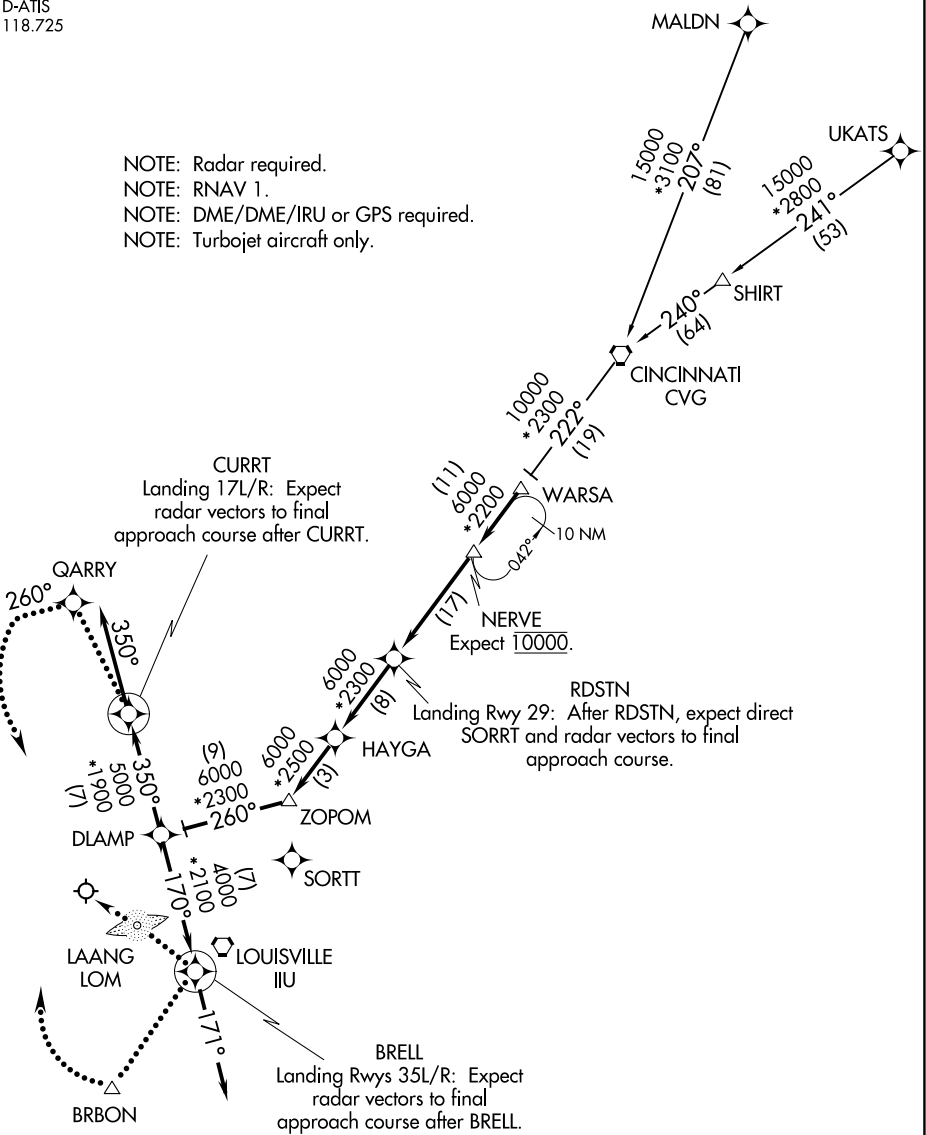


DLAMP SIX ARRIVAL (RNAV)

LOUISVILLE APP CON
132.075 327.0
D-ATIS
118.725

- NOTE: Radar required.
- NOTE: RNAV 1.
- NOTE: DME/DME/IRU or GPS required.
- NOTE: Turbojet aircraft only.



CURRT
Landing 17L/R: Expect
radar vectors to final
approach course after CURRT.

NERVE
Expect 10000.

RDSTN
Landing Rwy 29: After RDSTN, expect direct
SORRT and radar vectors to final
approach course.

BRELL
Landing Rwy 35L/R: Expect
radar vectors to final
approach course after BRELL.

NOTE: Chart not to scale.

(NARRATIVE ON FOLLOWING PAGE)

DLAMP SIX ARRIVAL (RNAV)

SE-1, 03 DEC 2020 to 31 DEC 2020

SE-1, 03 DEC 2020 to 31 DEC 2020