

APP CRS
170°

Rwy Idg **10000**
TDZE **485**
Apt Elev **501**

RNAV (RNP) Z RWY 17R
LOUISVILLE MUHAMMAD ALI INTL (SDF')

RNP AR APCH. RF required.

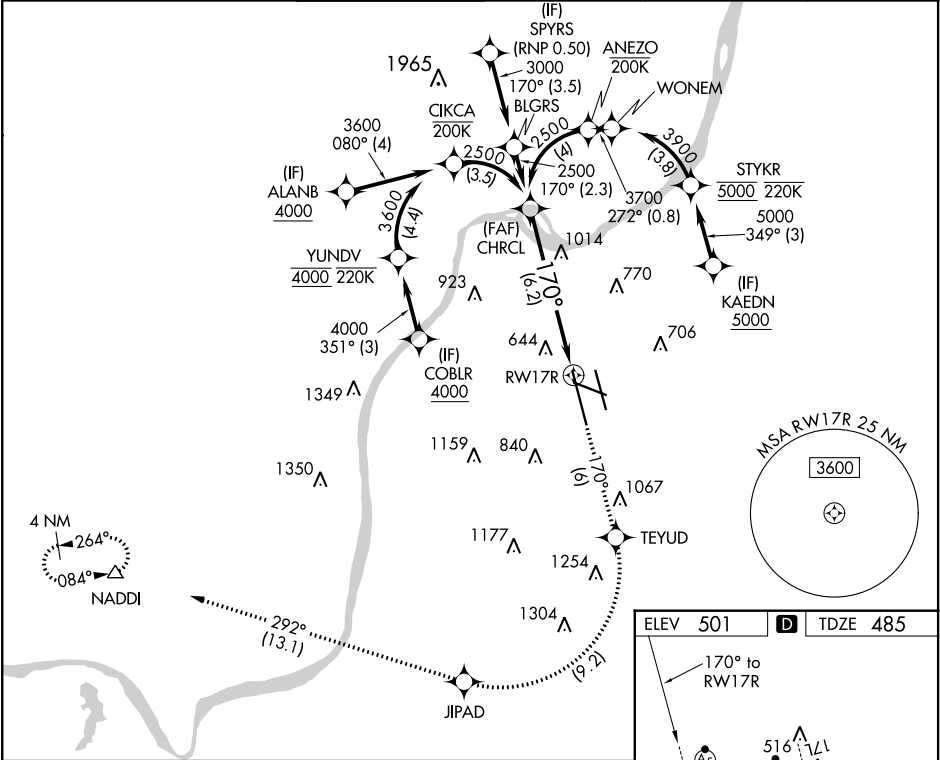
⚠

For uncompensated Baro-VNAV systems, procedure NA below -14°C or above 54°C. For inop ALS, increase RNP 0.30 all Cats visibility to 1 3/4 SM. Simultaneous approach authorized, except for arrivals at KAEDN, ALANB, and COBLR.

MALSR

MISSED APPROACH: Climb to 3000 on track 170° to TEYUD right turn to JIPAD and on track 292° to NADDI and hold.

D-ATIS 118.725	LOUISVILLE APP CON 132.075 327.0	LOUISVILLE TOWER 124.2 257.8	GND CON 121.7 348.6	CLNC DEL 126.1 275.8	CPDLC
--------------------------	--	--	-------------------------------	--------------------------------	-------



VGSI and RNAV glidepath not coincident (VGSI Angle 3.00/TCH 75).

3000

TEYUD

JIPAD

tr 292°

NADDI

See planview for multiple IF locations.

2500

170°

RW17R

GP 3.00° TCH 50

6.2 NM

CATEGORY	A	B	C	D
RNP 0.30 DA	974/60 489 (500-1)			

AUTHORIZATION REQUIRED

ELEV 501

D

TDZE 485

HIRL all Rwys
TDZ/CL Rwys 17L, 17R, 35L and 35R