

LOUISVILLE, KENTUCKY

AL-239 (FAA)

20310

WAAS CH <b>86203</b> <b>W35A</b>	APP CRS <b>350°</b>	Rwy Idg <b>10000</b> TDZE <b>464</b> Apt Elev <b>501</b>
--	------------------------	--

RNAV (GPS) Y RWY 35L  
LOUISVILLE MUHAMMAD ALI INTL (SDF)

RNP APCH.

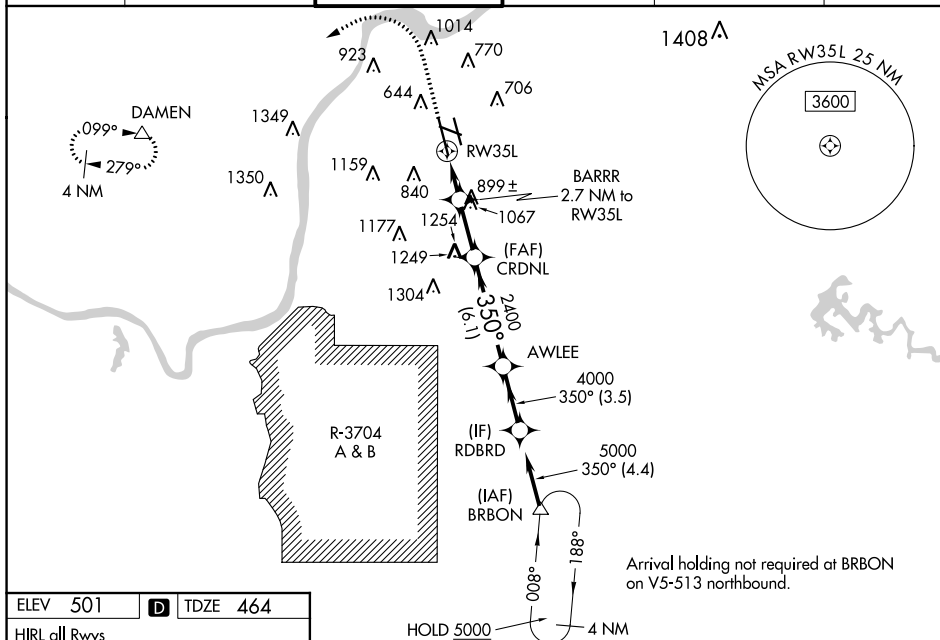
**▼** Circling Rwy 11 NA at night. Simultaneous approach authorized.  
**▲** LNAV procedure NA during simultaneous operations. Use of FD or AP required during simultaneous operations. For uncompensated Baro-VNAV systems, LNAV/VNAV NA below -14°C or above 54°C. For inop ALS, increase LNAV Cats C/D visibility to 1½ SM.

ALSF-2

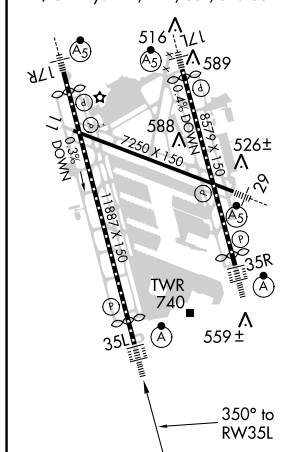


**MISSED APPROACH:** Climb to 1000 then climbing left turn to 3000 direct DAMEN and hold.

D-ATIS 118.725	LOUISVILLE APP CON 132.075 327.0	LOUISVILLE TOWER 124.2 257.8	GND CON 121.7 348.6	CLNC DEL 126.1 275.8	CPDLC
-------------------	-------------------------------------	---------------------------------	------------------------	-------------------------	-------



ELEV 501	<b>D</b>	TDZE 464
HIRL all Rwy's		
TDZ/CL Rwy's 17L, 17R, 35L, and 35R		



1000 ↑	3000 ↖	DAMEN △	VGS1 and RNAV glidepath not coincident (VGS1 Angle 3.00/TCH 75).				
* LNAV only.			<p>BARRR 2.7 NM to RW35L</p> <p>* 1.5 NM to RW35L</p> <p>CRDNL 2400</p> <p>AWLEE 350° 4000</p> <p>RDBRD 5000</p> <p>GP 3.00° TCH 59</p>				
CATEGORY	A		B		C		D
LPV DA			664/18		200 (200-½)		
LNAV/ VNAV DA			904/50		440 (500-1)		
LNAV MDA	1000/24		536 (500-½)		1000/55		536 (500-1)
CIRCLING	1040-1 539 (600-1)		1140-1 639 (700-1)		1160-1¾ 659 (700-1¾)		1400-3 899 (900-3)

LOUISVILLE, KENTUCKY  
Amdt 1E 15AUG19

38°10'N-85°44'W

LOUISVILLE MUHAMMAD ALI INTL (SDF)  
RNAV (GPS) Y RWY 35L

SE-1, 03 DEC 2020 to 31 DEC 2020