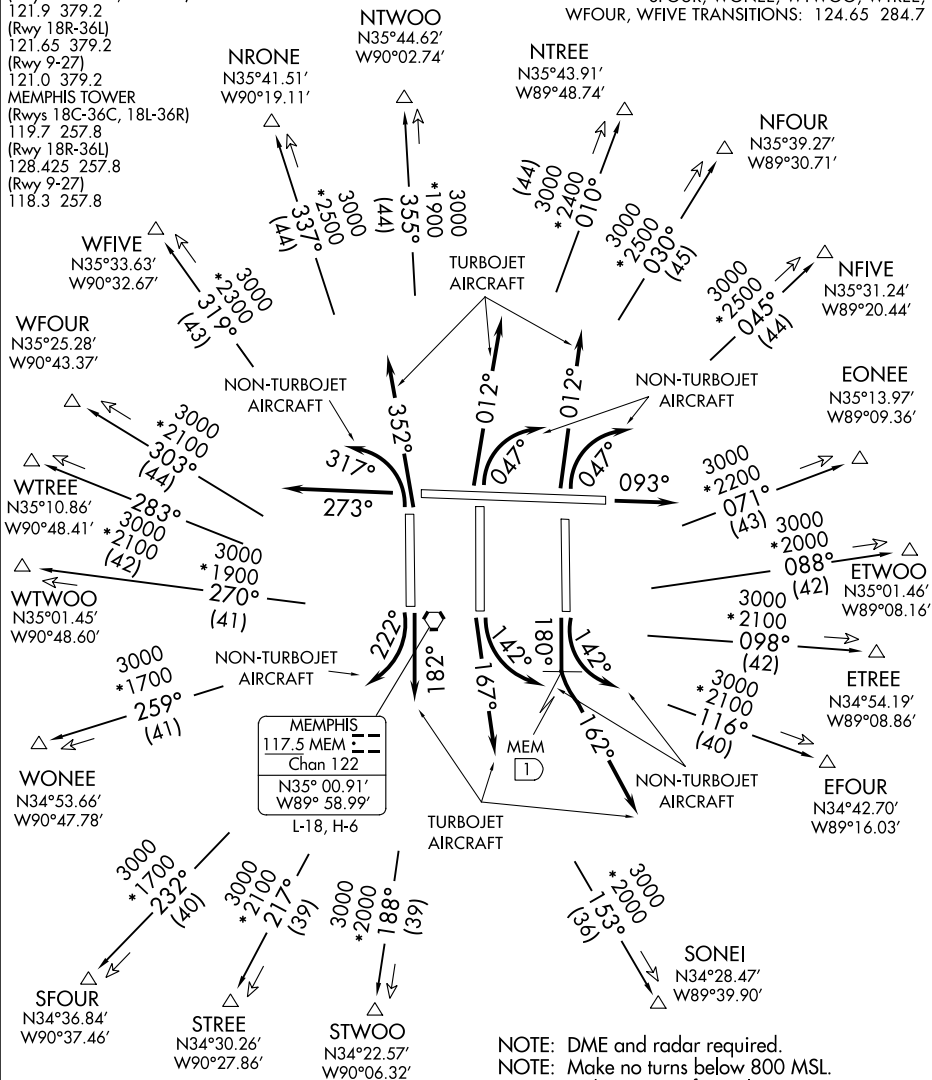


TOP ALTITUDE:
(JETS) 5000
(PROPS) 3000

MEMPHIS DEP CON
EONEE, ETWOO, ETREE, EFOUR
NTREE, NFOUR, NFIVE, SONEE
TRANSITIONS: 124.15 353.67
NRONE, NTWOO, STWOO, STREE
SFOUR, WONEE, WTWOO, WTREE,
WFOUR. WVEIVE TRANSITIONS: 124.65 284.7



NOTE: DME and radar required.
NOTE: Make no turns below 800 MSL.
NOTE: Turbojet aircraft accelerate to 250K immediately until reaching 10000 MSL, if unable advise ATC.
NOTE: Transponder code will be issued via PDC or Memphis clearance delivery.

TAKEOFF MINIMUMS:

Rwys 9, 18C/R, 27, 36L/C/R: Standard.
Rwy 18L: Props: Standard; Turbojets: Standard
with minimum climb of 340' per NM to 800.

(NARRATIVE ON FOLLOWING PAGES)

NOTE: Chart not to scale.