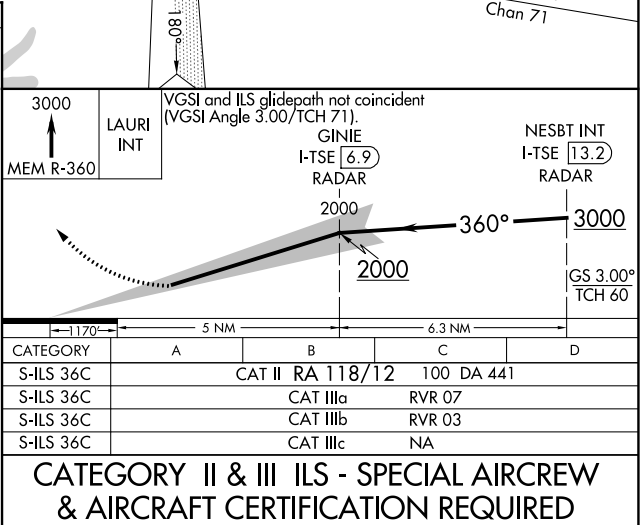
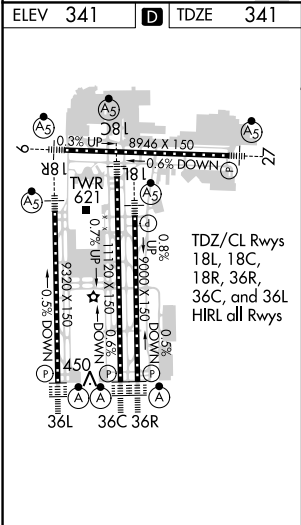
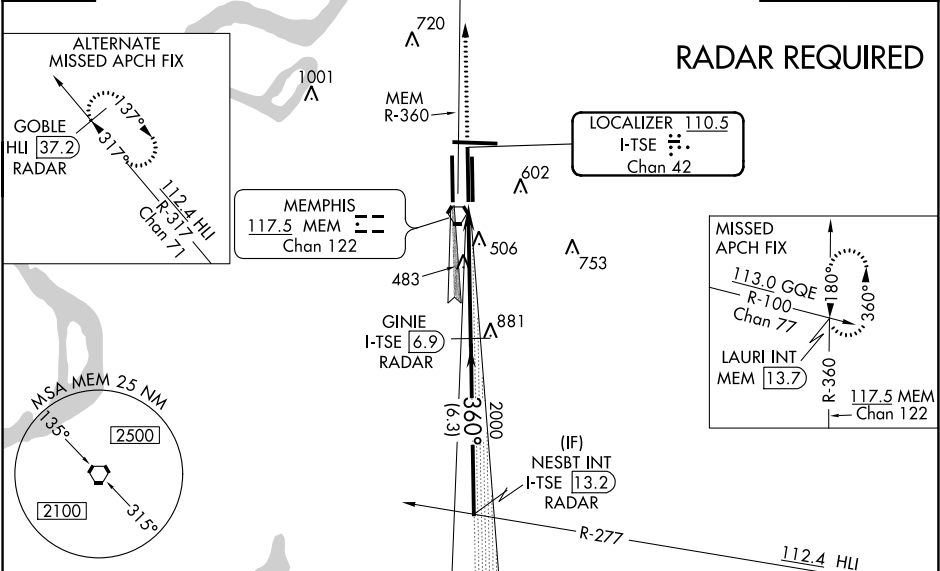


LOC/DME I-TSE	APP CRS	Rwy Idg	10715
110.5	360°	TDZE	341
Chan 42		Apt Elev	341

ILS RWY 36C (CAT II & III)
MEMPHIS INTL (MEM)

V A	DME or RADAR required. Simultaneous approach authorized with Rwy 36L.	ALSF-2 	MISSED APPROACH: Climb to 3000 via MEM VORTAC R-360 to LAURI INT/MEM 13.7 DME and hold.
MEMPHIS APP CON		MEMPHIS TOWER	GND CON
119.1 291.6 (176°-355°)		(Rwy 9-27) 118.3 257.8	(Rwy 9-27) 121.0 379.2
125.8 338.3 (356°-175°)		(Rwys 18C-36C, 18L-36R) 119.7 257.8	(Rwys 18C-36C, 18L-36R) 121.9 379.2
		(Rwy 18R-36L) 128.425 257.8	(Rwy 18R-36L) 121.65 379.2

D-ATIS 127.75	1337 A	1450 A	CINC DEL 125.2	CPDLC
------------------	--------	--------	-------------------	-------



SE-1, 03 DEC 2020 to 31 DEC 2020

SE-1, 03 DEC 2020 to 31 DEC 2020