

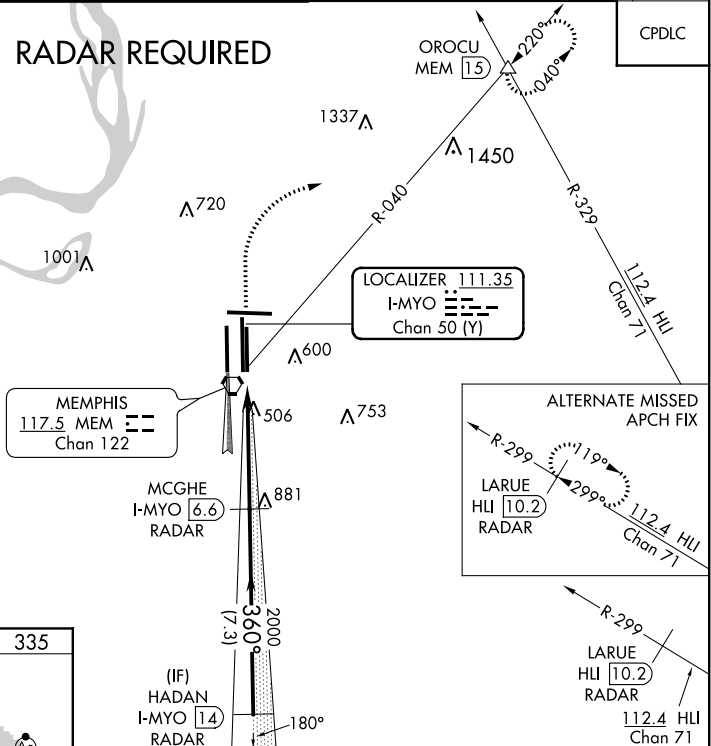
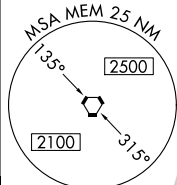
ILS RWY 36R (CAT II & III)
MEMPHIS INTL (MEM)

ALSF-2

MISSED APPROACH: Climb to 1000 then climbing right turn to 5000 via heading 070° and MEM VORTAC R-040 to OROCU INT/MEM VORTAC 15 DME and hold, continue climb-in-hold to 5000.

D-ATIS
127.75

RADAR REQUIRED



| | | | | | |
|---|-----------------------------|--------------|------------|--|---|
| 1000 ↑ | 5000 hdg 070° | MEM R-040 | OROCU △ | MCGHE I-MYO <u>6.6</u> RADAR 2000 | HADAN I-MYO <u>14</u> RADAR 3000 |
| <p>VGS1 and ILS glidepath not coincident (VGS1 Angle 3.00/TCH 69).</p> <p>GS 3.00° TCH 58</p> | | | | | |
| CATEGORY | A | | B | C | D |
| S-ILS 36R | CAT II RA 109/12 100 DA 435 | | | | |
| S-ILS 36R | CAT IIIa RVR07 | | | | |
| S-ILS 36R | CAT IIIb RVR03 | | | | |
| S-ILS 36R | CAT IIIc NA | | | | |

CATEGORY II & III ILS - SPECIAL AIRCREW
& AIRCRAFT CERTIFICATION REQUIRED

ILS RWY 36R (CAT II & III)