

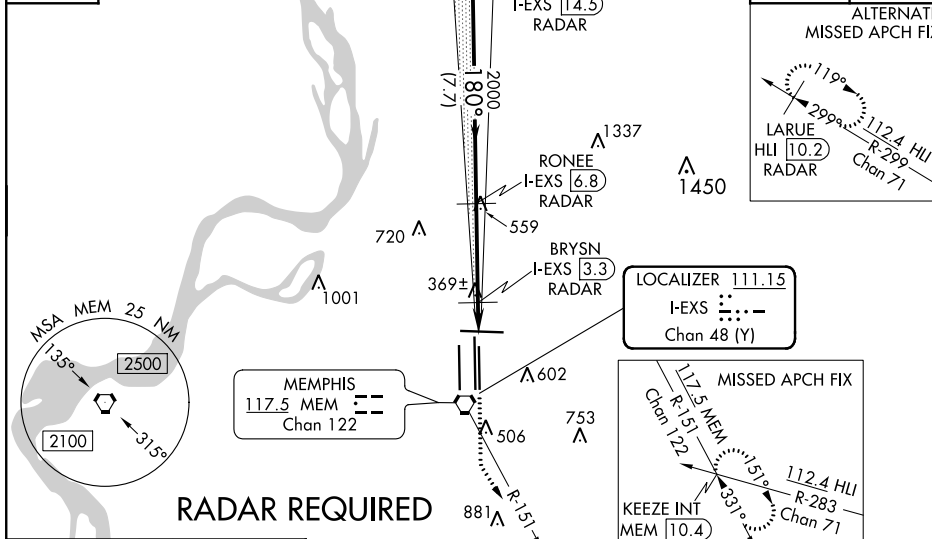


ILS or LOC RWY 18L
MEMPHIS INTL (MEM)

| | |
|--|--|
| MALSR  | MISSED APPROACH: Climb to 900 then climbing left turn to 5000 on MEM VORTAC R-151 to KEEZE INT/MEM 10.4 DME and hold, continue climb-in-hold to 5000. |
|--|--|

| | | | |
|-------------------------|---|--------------------------|-------|
| D-ATIS 127.75 |  | CLNC DEL 125.2 | CPDLC |
|-------------------------|---|--------------------------|-------|



VGSB and ILS glidepath not coincident (VGSB Angle 3.00/TCH 73).

REISE
I-EXS 14.5
RADAR

RONEE
I-EXS 6.8
RADAR

BRYSN
I-EXS 3.3
RADAR

I-EXS 2.5
I-EXS 1.7

3000
180°
2000
*820

GS 3.00°
TCH 60

7.7 NM
3.5 NM
0.8 NM
0.9 NM

900
5000
MEM R-151

* LOC only

KEEZE
INT

| CATEGORY | A | B | C | D | E |
|--------------------|--------------------|-------------|------------------------|-------------------------|-------------------------|
| S-ILS 18L | 501/18 200 (200-½) | | | | 501/24 200 (200-½) |
| S-LOC 18L | 820/24 | 519 (500-½) | 820/50 519 (500-1) | 820/60 | 519 (500-1½) |
| CIRCLING | 940-1 | 599 (600-1) | 940-1½ 599 (600-1½) | 1020-2¼ 679 (700-2¼) | 1140-2¾ 799 (800-2¾) |
| BRYSN FIX MINIMUMS | | | | | |
| S-LOC 18L | 620/24 319 (300-½) | | 620/40 319 (300-¾) | | |
| CIRCLING | 940-1 | 599 (600-1) | 940-1½ 599 (600-1½) | 1020-2¼ 679 (700-2¼) | 1140-2¾ 799 (800-2¾) |

SE-1, 03 DEC 2020 to 31 DEC 2020

SE-1, 03 DEC 2020 to 31 DEC 2020