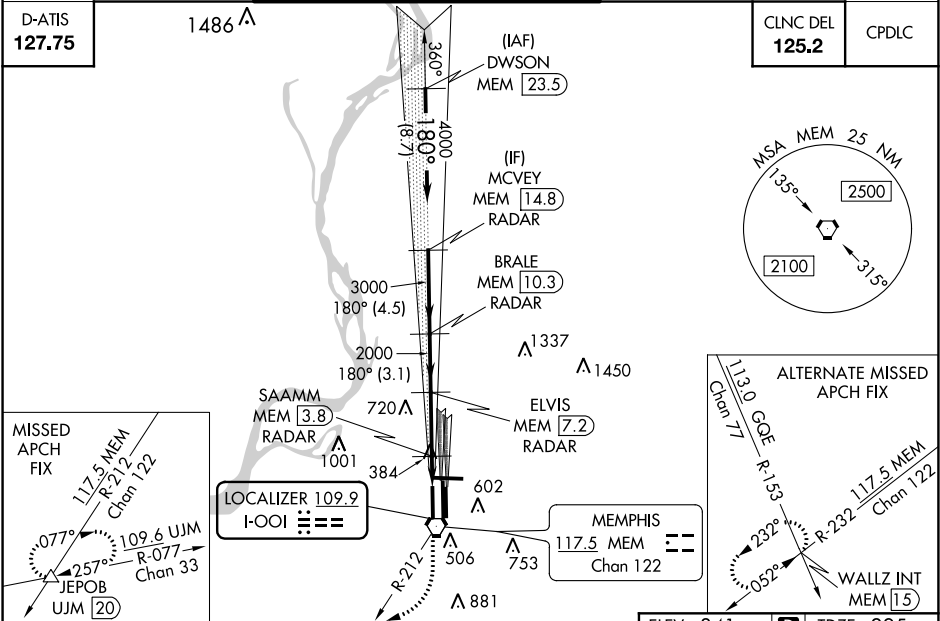


LOC I-001	APP CRS	Rwy Idg	9320
109.9	180°	TDZE	295
		Apt Elev	341

ILS or LOC RWY 18R
MEMPHIS INTL (MEM)

Radar required for procedure entry, DME or RADAR required.		MALSR	MISSED APPROACH: Climb to 900 then climbing right turn to 5000 on MEM VORTAC R-212 to JEPOB INT/UJM 20 DME and hold.
Simultaneous approach authorized. For inop ALS, increase S-ILS 18R Cat E visibility to RVR 4000, S-LOC 18R Cat E visibility to 2 SM, SAAMM fix minimums, increase S-LOC 18R Cat E visibility to 1½ SM.			
MEMPHIS APP CON		MEMPHIS TOWER	
119.1 291.6 (176°-355°)		118.3 257.8 (Rwy 9-27)	
125.8 338.3 (356°-175°)		119.7 257.8 (Rwys 18C-36C, 18L-36R)	
		128.425 257.8 (Rwy 18R-36L)	
		GND CON	
		121.0 379.2 (Rwy 9-27)	
		121.9 379.2 (Rwys 18C-36C, 18L-36R)	
		121.65 379.2 (Rwy 18R-36L)	



MCVEY MEM 14.8 RADAR		BRALE MEM 10.3 RADAR	ELVIS MEM 7.2 RADAR	SAAMM MEM 3.8 RADAR	JEPOB MEM 2.1
4000		3000	2000	1000	500
GS 3.00° TCH 52		180°	180°	180°	180°
4.5 NM		3.1 NM	3.4 NM	1.7 NM	
CATEGORY	A	B	C	D	E
S-ILS 18R	495/18 200 (200-½)				495/24 200 (200-½)
S-LOC 18R	840/24	545 (500-½)	840/50 545 (500-1)	840/60 545 (500-1½)	840-1½ 545 (500-1½)
CIRCLING	940-1	599 (600-1)	940-1½ 599 (600-1½)	1020-2¼ 679 (700-2¼)	1140-2¾ 799 (800-2¾)
SAAMM FIX MINIMUMS (DME OR RADAR REQUIRED)					
S-LOC 18R	700/24	405 (400-½)	700/40 405 (400-¾)	700/50 405 (400-1)	
CIRCLING	940-1	599 (600-1)	940-1½ 599 (600-1½)	1020-2¼ 679 (700-2¼)	1140-2¾ 799 (800-2¾)
ELEV 341 TDZE 295					
180° 5.1 NM from FAF					
TWR 621 0.7 UP 1120 X 150 0.6 DOWN 0.3 UP 920 X 150 0.3 DOWN					
TDZ/CL Rwys 18L, 18C, 18R, 36R, 36C, and 36L HIRL all Rwys					
FAF to MAP 5.1 NM					
Knots		60	90	120	150
Min:Sec		5:06	3:24	2:33	2:02

SE-1, 03 DEC 2020 to 31 DEC 2020

SE-1, 03 DEC 2020 to 31 DEC 2020