

ARRIVAL ROUTE DESCRIPTION

CHOO CHOO TRANSITION (GQO LUGOH3): From over GQO VORTAC on GQO R-262 and RQZ R-080 to RQZ VORTAC, then on RQZ R-261 and MSL R-081 to MSL VORTAC, then on MSL R-266 to CRAMM, then on HII R-102 to LUGOH, thence....

TUPELO TRANSITION (OTB LUGOH3): From over OTB VOR/DME on OTB R-323 to LUGOH, thence....

LANDING NORTH: From over LUGOH on HII R-102 to cross MASHH at 10000 and 230K, then on heading 270°, expect RADAR vectors to final approach course.

LANDING SOUTH: From over LUGOH on HII R-102 to cross MASHH at or above 14000 and at or below 16000, then on HII R-102 to HII, then on MEM R-120 to cross LARUE at 250K, then on MEM R-120 to cross FLOND at or above 9000 and at or below 11000, then on MEM R-120 to cross STAXX at or above 8000 and at 210K, then on heading 360°, expect RADAR vectors to final approach course.

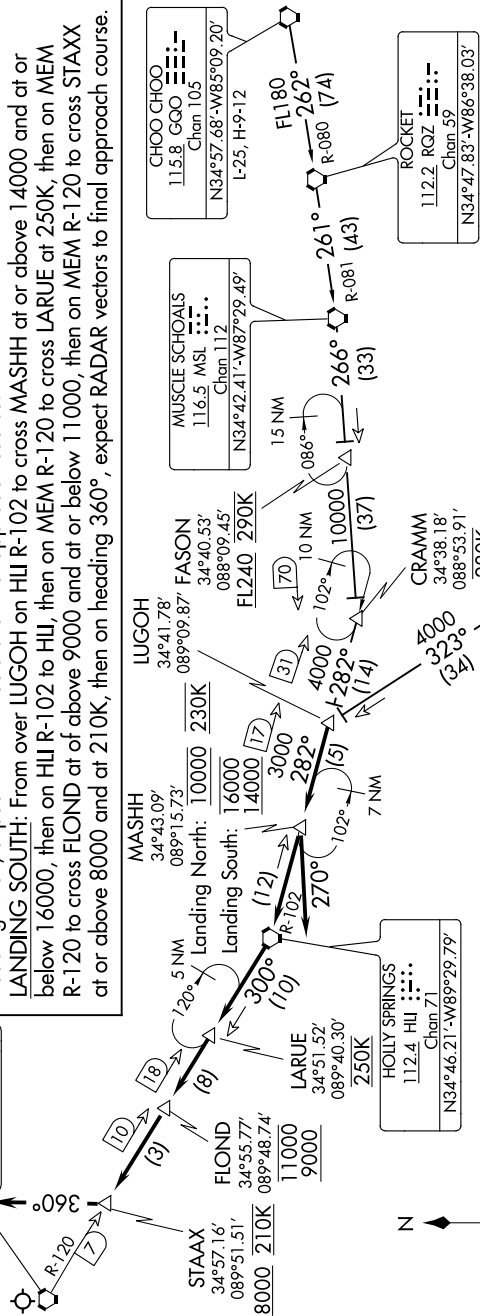
MEMPHIS APP CON
119.1 291.6 (176°-355°)
125.8 338.3 (356°-175°)
D-ATIS
127.75

MEMPHIS
117.5 MEM
Chan 122

LUGOH THREE ARRIVAL
(LUGOH.LUGOH3) 24MAY18

AL-253 (FAA)

MEMPHIS INTL (MEM)
MEMPHIS, TENNESSEE



- NOTE: DME and RADAR required.
- NOTE: Procedure not available for RNAV capable turbojets.
- NOTE: RNAV capable turbojets must file the VANZE RNAV STAR.
- NOTE: Maintain last assigned altitude until cleared to "descend via the LUGOH THREE," then comply with altitude restrictions as published.

NOTE: Chart not to scale.

MEMPHIS, TENNESSEE
MEMPHIS INTL (MEM)