

MONAA THREE ARRIVAL (RNAV)

ARRIVAL ROUTE DESCRIPTION

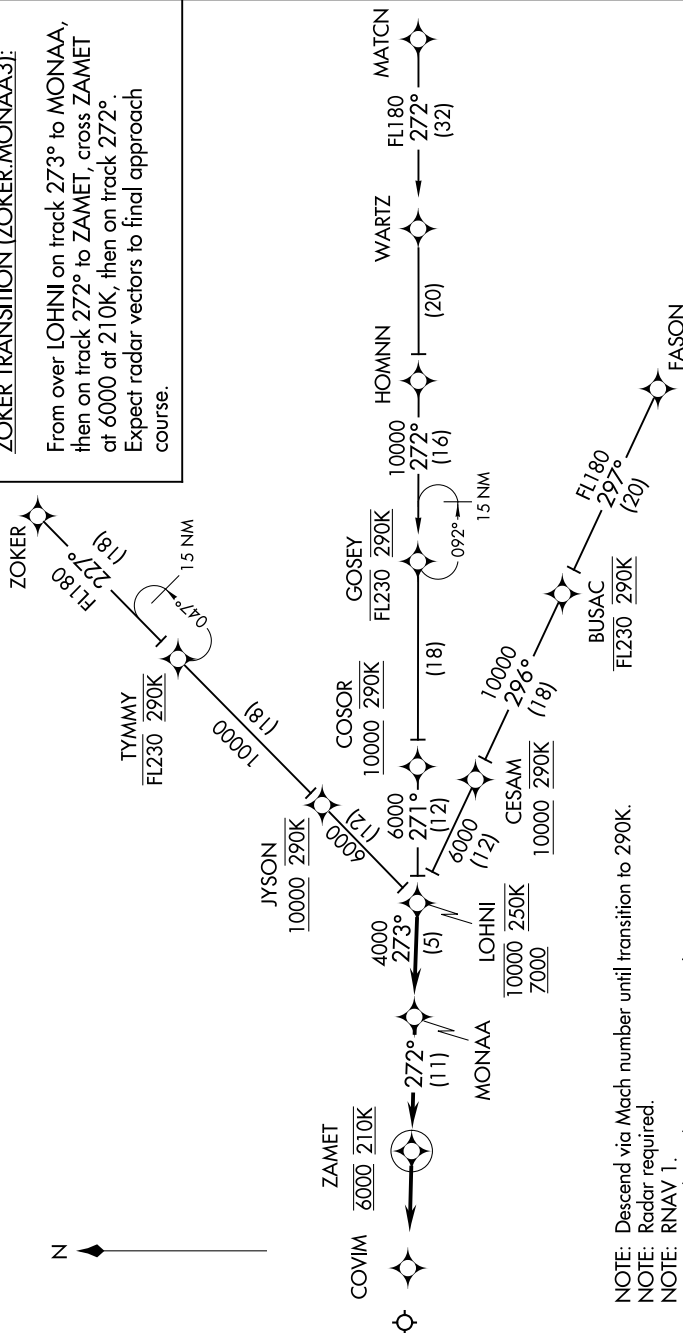
FASON TRANSITION (FASON.MONAA3):

HOMNN TRANSITION (HOMNN.MONAA3):

MATCHN TRANSITION (MATCHN.MONAA3

ZOKER TRANSITION (ZOKER.MONAA3):

From over LOHNI on track 273° to MONAA, then on track 272° to ZAMET, cross ZAMET at 6000 at 210K, then on track 272°. Expect radar vectors to final approach course.



NOTE: Chart not to scale.

NOTE: Descend via Mach number until transition to 290K.

NOTE: Radar required.

NOTE: RNAV 1.

NOTE: DME/DME/IRU or GPS required.

NOTE: Turbojet aircraft only.

NOTE: Assigned by ATC only.

SE-1, 03 DEC 2020 to 31 DEC 2020

MONAA THREE ARRIVAL (RNAV)

(MONAA.MONAA3) 01FEB18

MEMPHIS, TENNESSEE
MEMPHIS INTL (MEM)