

WAAS CH 65907 W36A	APP CRS 360°	Rwy Idg TDZE Apt Elev	9320 321 341
--	------------------------	-----------------------------	---

RNAV (GPS) RWY 36L
MEMPHIS INTL(MEM)

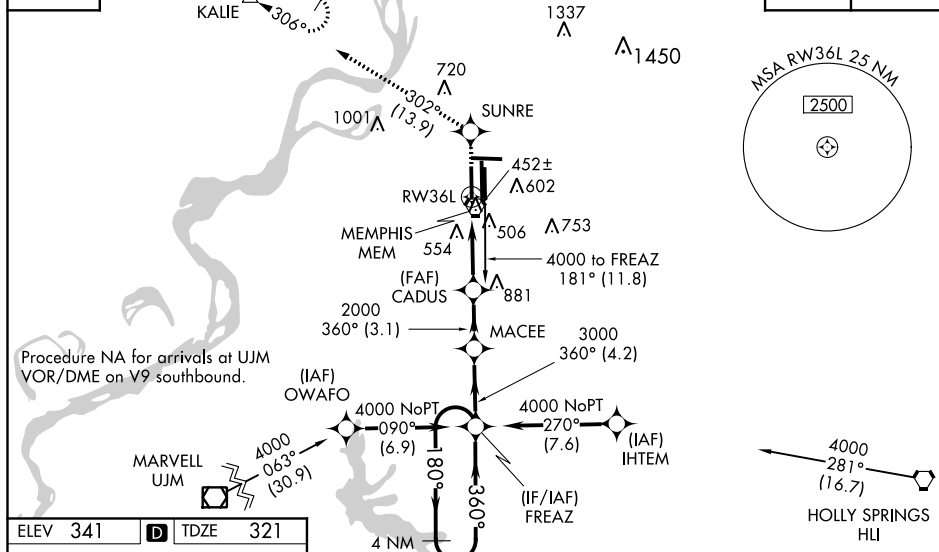
▼ For uncompensated Baro-VNAV systems, LNAV/VNAV NA below -15°C (5°F) or above 48°C (118°F). Simultaneous approach authorized. DME/DME RNP-0.3 NA. LNAV procedure NA during simultaneous operations. Use of FD or AP required during simultaneous operations.

ALSF-2

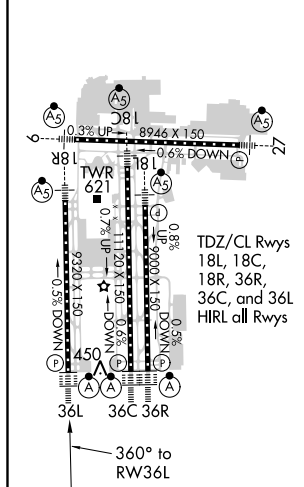
MISSED APPROACH: Climb to 5000 direct SUNRE and on track 302° to KALIE and hold, continue climb-in-hold to 5000.

MEMPHIS APP CON		MEMPHIS TOWER		GND CON	
119.1	291.6 (176°-355°)	(Rwy 9-27)	118.3 257.8	(Rwy 9-27)	121.0 379.2
125.8	338.3 (356°-175°)	(Rwys 18C-36C, 18L-36R)	119.7 257.8	(Rwys 18C-36C, 18L-36R)	121.9 379.2
		(Rwy 18R-36L)	128.425 257.8	(Rwy 18R-36L)	121.65 379.2

D-ATIS 127.75		CLNC DEL 125.2	CPDLC
-------------------------	---	--------------------------	-------



ELEV 341	D	TDZE 321
----------	----------	----------



Procedure NA for arrival on HLI VORTAC
airway radials 222 CW 303.

***RNAV only.**

SUNRE tr 302° KALIE △

CADUS 2000

MACCEE 3000

FREA Z 4 NM Holding Pattern

180° → 4000
← 360°

GP 3.00°
TCH 59

VGS I and RNAV glidepath not coincident
(VGS I Angle 3.00/TCH 73)

CATEGORY	A	B	C	D
LPV DA	673/40	352 (400-¾)		
LNNAV/ VNNAV	760/50	439 (500-1)		
LNNAV MDA	780/24	459 (500-½)	780/40 459 (500-¾)	780/50 459 (500-1)
C CIRCLING	940-1	599 (600-1)	940-1½ 599 (600-1½)	1020-2¼ 679 (700-2¼)

MEMPHIS INTL(MEM)
RNAV (GPS) RWY 36L