

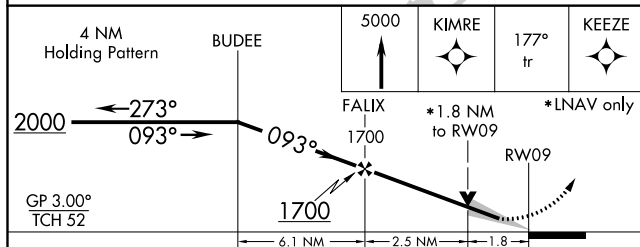
RNAV (GPS) RWY 9
MEMPHIS INTL (MEM)

MISSED APPROACH: Climb to 5000 direct KIMRE and on 177° track to KEEZE and hold, continue climb-in-hold to 5000.

D-ATIS
127.75

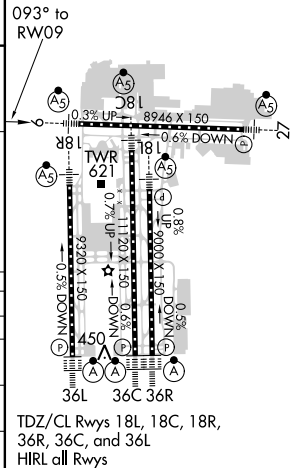
1337.

CPDLC



CATEGORY	A	B	C	D
LPV DA	557/24 298 (300-½)			
LNAV/ VNAV DA	782/60 523 (500-1¼)			
LNAV MDA	880/24 621 (600-½)		880/60 621 (600-1¼)	880-1½ 621 (600-½)
C CIRCLING	940-1 599 (600-1)		940-1½ 599 (600-1½)	1020-2¼ 679 (700-2¼)

ELEV 341	D	TDZE 259
----------	----------	----------



SE-1, 03 DEC 2020 to 31 DEC 2020