


APP CRS	Rwy Idg	9000
180°	TDZE	301
	Apt Elev	341

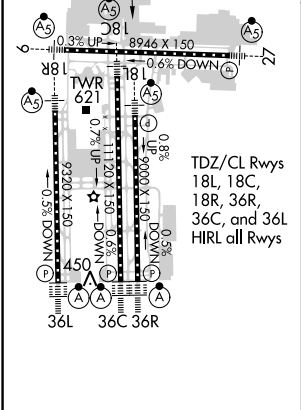
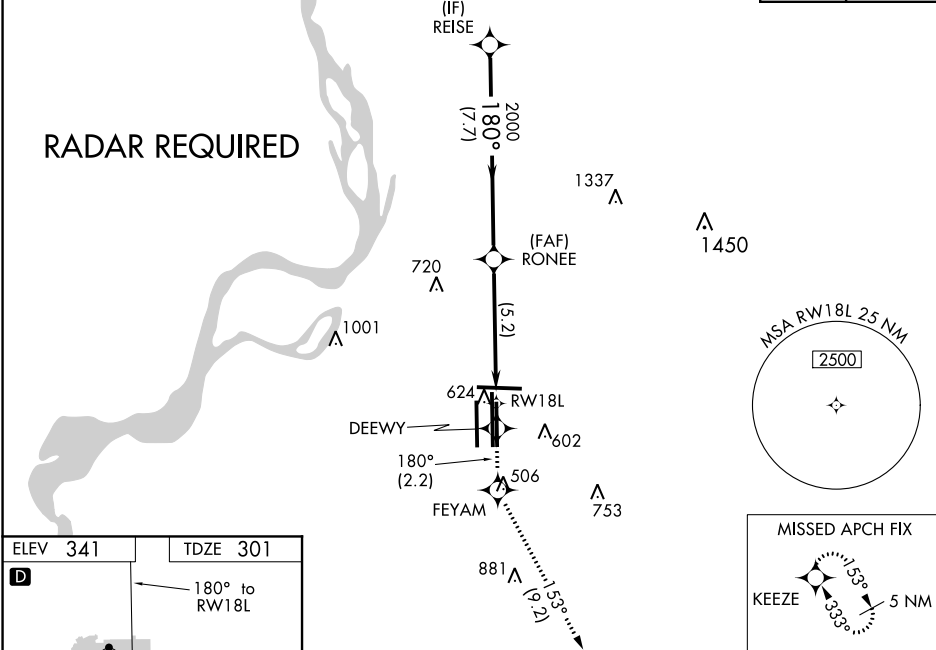
# RNAV (RNP) X RWY 18L

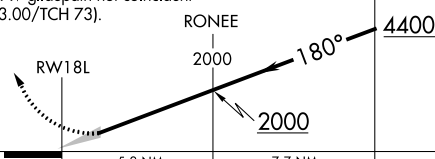
MEMPHIS INTL (MEM)

<p>▼ For uncompensated Baro-VNAV systems, LNAV/VNAV NA below -9°C (16°F) or above 48°C (118 °F). Simultaneous approach authorized. GPS required. Missed approach requires RNP less than 1.0. For inop ALS increase RNP 0.11 all Cats visibility to RVR 6000.</p>	<p>MALSR</p> 	<p>MISSED APPROACH: Climb to 5000 on track 180° to DEEWY and on track 180° to FEYAM left turn on track 153° to KEEZE and hold, continue climb-in-hold to 5000.</p>
--	--	--

MEMPHIS APP CON	MEMPHIS TOWER	GND CON
119.1 291.6 (176°-355°)	(Rwy 9-27) 118.3 257.8	(Rwy 9-27) 121.0 379.2
125.8 338.3 (356°-175°)	(Rwys 18C-36C, 18L-36R) 119.7 257.8	(Rwys 18C-36C, 18L-36R) 121.9 379.2
	(Rwy 18R-36L) 128.425 257.8	(Rwy 18R-36L) 121.65 379.2

D-ATIS	CLNC DEL	CPDLC
127.75	125.2	



5000	tr 180°	DEEWY	tr 180°	FEYAM	tr 153°	KEEZE
VGSI and RNAV glidepath not coincident (VGSI Angle 3.00/TCH 73).						
						
CATEGORY	A	B	C	D		
RNP 0.11 DA	647/40 346 (400-¾)					
AUTHORIZATION REQUIRED						