

LOC/DME I-BNA <b>109.9</b> Chan <b>36</b>	APP CRS <b>021°</b>	Rwy ldg TDZE Apt Elev <b>7702</b> <b>599</b> <b>599</b>
---	------------------------	--

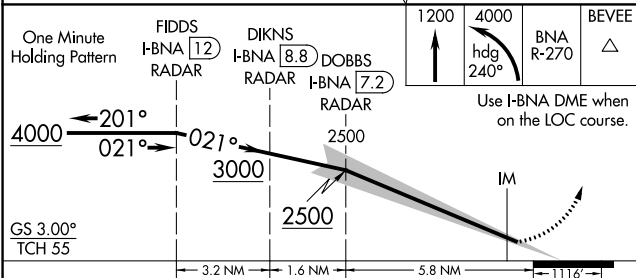
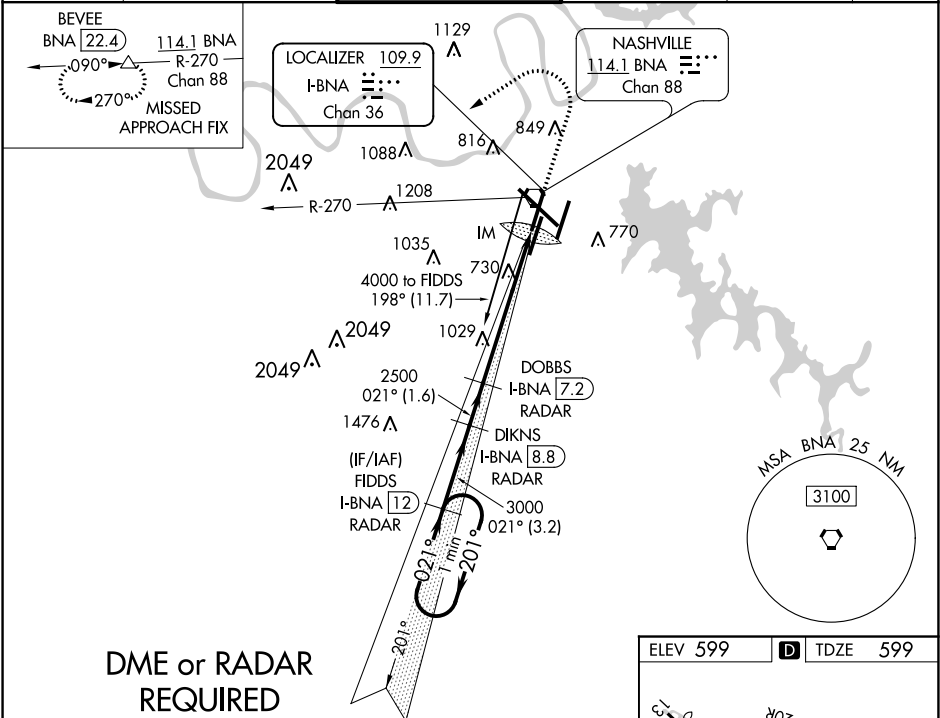
ILS RWY 2L (SA CAT I)  
NASHVILLE INTL (BNA)

Simultaneous approach authorized with Rwy 2R.  
DME or radar required.  
Requires specific OPSPEC, MSPEC, or LOA approval  
and use of HUD to DH.

ALSIF-2

MISSED APPROACH: Climb to 1200 then climbing left turn to 4000 on heading 240° and on BNA VORTAC R-270 to BEVEE/BNA 22.4 DME and hold.

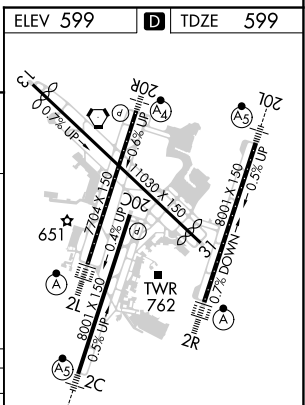
D-ATIS <b>135.1</b>	NASHVILLE APP CON <b>118.4 360.7</b>	NASHVILLE TOWER <b>118.6 257.8</b>	GND CON <b>121.9 348.6</b>	CLNC DEL <b>126.05</b>	CPDLC
------------------------	---	---------------------------------------	-------------------------------	---------------------------	-------



CATEGORY	A	B	C	D
S-ILS 2L	RA 159/14 150 DA 749			

**SA CATEGORY I ILS - SPECIAL AIRCREW & AIRCRAFT CERTIFICATION REQUIRED**

HIRL all Rwy's  
TDZ/CL Rwy's 2L and 2R  
REIL Rwy's 13, 20C, and 31



SE-1, 03 DEC 2020 to 31 DEC 2020

SE-1, 03 DEC 2020 to 31 DEC 2020